

DATASHEET

PB1 Rabbit Polyclonal Antibody

CAT. NO. APA14929

KEY FEATURES

Target	PB1	Source / Host	Rabbit
Reactivity	Human, Mouse, Rat	Clonality	Polyclonal
Applications	WB	Conjugation	Unconjugated
Form / Buffer	Liquid in 0.42% Potassium phosphate, 0.87% Sodium chloride, pH 7.3, 30% glycerol, and 0.01% sodium azide.		Storage at-20°C

BACKGROUND

Involved in transcriptional activation and repression of select genes by chromatin remodeling (alteration of DNA-nucleosome topology). Required for the stability of the SWI/SNF chromatin remodeling complex SWI/SNF-B (PBAF). Acts as a negative regulator of cell proliferation.

APPLICATION

To ensure optimal assay performance, AREX recommends conducting reagent titration tailored to each testing system for optimal detection results.

WB	1:500 - 1:2000
----	----------------

*Results are sample-specific. Please refer to your local assay conditions and test parameters for reference.

PRODUCT OVERVIEW

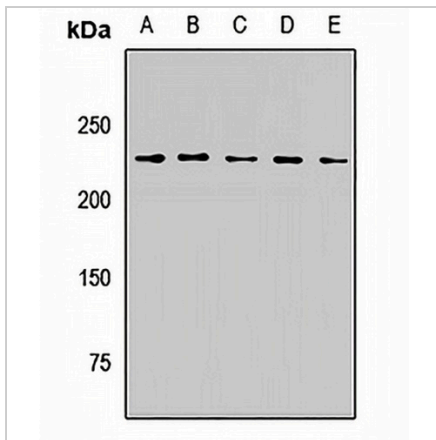
Description	Rabbit polyclonal antibody to PB1
Specificity	Recognizes endogenous levels of PB1 protein.
Antibody Type	Primary antibody
Immunogen	Recombinant fusion protein of human PB1
Purification	The antibody was purified by immunogen affinity chromatography.
Molecular Weight	Predicted: 99; Observed: 230 kD
Form/Buffer	Liquid in 0.42% Potassium phosphate, 0.87% Sodium chloride, pH 7.3, 30% glycerol, and 0.01% sodium azide.
Alternative Names	BAF180; PB1; Protein polybromo-1; hPB1; BRG1-associated factor 180; BAF180; Polybromo-1D
Gene Symbol	PBRM1
Entrez Gene	55193(Human)
SwissProt	Q86U86(Human); Q8BSQ9(Mouse)

*AREX continuously optimizes our products. Webpage content may not reflect the latest updates. For inquiries, please contact info@arexbio.com or your local distributor.

*Clone Number, Reactivity, Source/Host and Clonality can be found in the product name and Key Features section above.

DATASHEET**PB1 Rabbit Polyclonal Antibody**

CAT. NO. APA14929

DATA

Western blot analysis of PB1 expression in Hela (A), Jurkat (B), NIH3T3 (C), mouse lung (D), rat liver (E) whole cell lysates. (Predicted band size: 99; 181-192 kD; Observed band size: 230 kD)

STORAGE

Store at 4°C short term. For long term storage, store at -20°C, avoiding freeze/thaw cycles.

NOTE

For Research Use Only. Not for diagnostic, therapeutics, prophylactic or in vivo use.