

DATASHEET

Dectin 1 Rabbit Polyclonal Antibody

CAT. NO. APA14932

KEY FEATURES

Target	Dectin 1	Source / Host	Rabbit
Reactivity	Human, Mouse	Clonality	Polyclonal
Applications	WB	Conjugation	Unconjugated
Form / Buffer	Liquid in 0.42% Potassium phosphate, 0.87% Sodium chloride, pH 7.3, 30% glycerol, and 0.01% sodium azide.		Storage at -20°C

BACKGROUND

Lectin that functions as a pattern recognizing receptor (PRR) specific for beta-1,3-linked and beta-1,6-linked glucans, which constitute cell wall constituents from pathogenic bacteria and fungi specific for beta-1,3-linked and beta-1,6-linked glucans, which constitute cell wall constituents from pathogenic bacteria and fungi . Necessary for the TLR2-mediated inflammatory response and activation of NF-kappa-B: upon beta-glucan binding, recruits SYK via its ITAM motif and promotes a signaling cascade that activates some CARD domain-BCL10-MALT1 (CBM) signalosomes, leading to the activation of NF-kappa-B and MAP kinase p38 (MAPK11, MAPK12, MAPK13 and/or MAPK14) pathways which stimulate expression of genes encoding pro-inflammatory cytokines and chemokines .

APPLICATION

To ensure optimal assay performance, AREX recommends conducting reagent titration tailored to each testing system for optimal detection results.

WB	1:500 - 1:2000
----	----------------

*Results are sample-specific. Please refer to your local assay conditions and test parameters for reference.

PRODUCT OVERVIEW

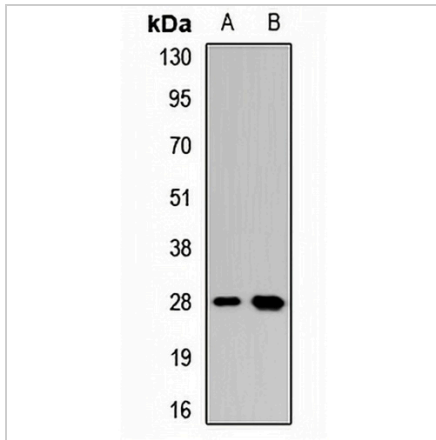
Description	Rabbit polyclonal antibody to Dectin 1
Specificity	Recognizes endogenous levels of Dectin 1 protein.
Antibody Type	Primary antibody
Immunogen	KLH-conjugated synthetic peptide of human Dectin 1
Purification	The antibody was purified by immunogen affinity chromatography.
Molecular Weight	Predicted: 5; Observed: 28 kD
Form/Buffer	Liquid in 0.42% Potassium phosphate, 0.87% Sodium chloride, pH 7.3, 30% glycerol, and 0.01% sodium azide.
Alternative Names	BGR; CLECSF12; DECTIN1; C-type lectin domain family 7 member A; Beta-glucan receptor; C-type lectin superfamily member 12; Dendritic cell-associated C-type lectin 1; DC-associated C-type lectin 1; Dectin-1
Gene Symbol	CLEC7A
Entrez Gene	64581(Human); 56644(Mouse)
SwissProt	Q9BXN2(Human); Q6QLQ4(Mouse)

*AREX continuously optimizes our products. Webpage content may not reflect the latest updates. For inquiries, please contact info@arexbio.com or your local distributor.

*Clone Number, Reactivity, Source/Host and Clonality can be found in the product name and Key Features section above.

DATASHEET**Dectin 1 Rabbit Polyclonal Antibody**

CAT. NO. APA14932

DATA

Western blot analysis of Dectin 1 expression in MCF7 (A), mouse liver (B) whole cell lysates. (Predicted band size: 5; 8; 13-27 kD; Observed band size: 28 kD)

STORAGE

Store at 4°C short term. For long term storage, store at -20°C, avoiding freeze/thaw cycles.

NOTE

For Research Use Only. Not for diagnostic, therapeutics, prophylactic or in vivo use.