

DATASHEET

LRSAM1 Rabbit Polyclonal Antibody

CAT. NO. APA14933

KEY FEATURES

Target	LRSAM1	Source / Host	Rabbit
Reactivity	Human, Mouse, Rat	Clonality	Polyclonal
Applications	WB	Conjugation	Unconjugated
Form / Buffer	Liquid in 0.42% Potassium phosphate, 0.87% Sodium chloride, pH 7.3, 30% glycerol, and 0.01% sodium azide.		Storage at -20°C

BACKGROUND

E3 ubiquitin-protein ligase that mediates monoubiquitination of TSG101 at multiple sites, leading to inactivate the ability of TSG101 to sort endocytic (EGF receptors) and exocytic (HIV-1 viral proteins) cargos and exocytic (HIV-1 viral proteins) cargos . Bacterial recognition protein that defends the cytoplasm from invasive pathogens . Localizes to several intracellular bacterial pathogens and generates the bacteria-associated ubiquitin signal leading to autophagy-mediated intracellular bacteria degradation (xenophagy) .

APPLICATION

To ensure optimal assay performance, AREX recommends conducting reagent titration tailored to each testing system for optimal detection results.

WB	1:500 - 1:2000
----	----------------

*Results are sample-specific. Please refer to your local assay conditions and test parameters for reference.

PRODUCT OVERVIEW

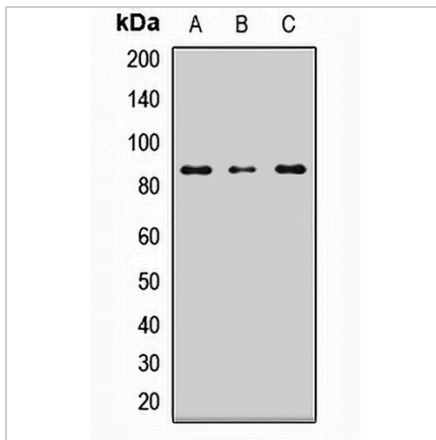
Description	Rabbit polyclonal antibody to LRSAM1
Specificity	Recognizes endogenous levels of LRSAM1 protein.
Antibody Type	Primary antibody
Immunogen	Recombinant fusion protein of human LRSAM1
Purification	The antibody was purified by immunogen affinity chromatography.
Molecular Weight	Predicted: 35; Observed: 84 kD
Form/Buffer	Liquid in 0.42% Potassium phosphate, 0.87% Sodium chloride, pH 7.3, 30% glycerol, and 0.01% sodium azide.
Alternative Names	TAL; E3 ubiquitin-protein ligase LRSAM1; Leucine-rich repeat and sterile alpha motif-containing protein 1; Tsg101-associated ligase; hTAL
Gene Symbol	LRSAM1
Entrez Gene	90678(Human); 227738(Mouse)
SwissProt	Q6UWE0(Human); Q80ZI6(Mouse)

*AREX continuously optimizes our products. Webpage content may not reflect the latest updates. For inquiries, please contact info@arexbio.com or your local distributor.

*Clone Number, Reactivity, Source/Host and Clonality can be found in the product name and Key Features section above.

DATASHEET**LRSAM1 Rabbit Polyclonal Antibody**

CAT. NO. APA14933

DATA

Western blot analysis of LRSAM1 expression in HepG2 (A), mouse brain (B), rat brain (C) whole cell lysates. (Predicted band size: 35; 80; 83 kD; Observed band size: 84 kD)

STORAGE

Store at 4°C short term. For long term storage, store at -20°C, avoiding freeze/thaw cycles.

NOTE

For Research Use Only. Not for diagnostic, therapeutics, prophylactic or in vivo use.