

**DATASHEET**

**ATP1B2 Rabbit Polyclonal Antibody**

CAT. NO. APA14935

**KEY FEATURES**

Target	ATP1B2	Source / Host	Rabbit
Reactivity	Human, Mouse, Rat	Clonality	Polyclonal
Applications	WB, IF/ICC	Conjugation	Unconjugated
Form / Buffer	Liquid in 0.42% Potassium phosphate, 0.87% Sodium chloride, pH 7.3, 30% glycerol, and 0.01% sodium azide.		Storage at-20°C

**BACKGROUND**

This is the non-catalytic component of the active enzyme, which catalyzes the hydrolysis of ATP coupled with the exchange of Na(+) and K(+) ions across the plasma membrane. The exact function of the beta-2 subunit is not known.; Mediates cell adhesion of neurons and astrocytes, and promotes neurite outgrowth.

**APPLICATION**

To ensure optimal assay performance, AREX recommends conducting reagent titration tailored to each testing system for optimal detection results.

WB	1:500 - 1:2000
IF/ICC	1:50 - 1:200

\*Results are sample-specific. Please refer to your local assay conditions and test parameters for reference.

**PRODUCT OVERVIEW**

Description	Rabbit polyclonal antibody to ATP1B2
Specificity	Recognizes endogenous levels of ATP1B2 protein.
Antibody Type	Primary antibody
Immunogen	Recombinant fusion protein of human ATP1B2
Purification	The antibody was purified by immunogen affinity chromatography.
Molecular Weight	Predicted: 33 kD; Observed: 42 kD
Form/Buffer	Liquid in 0.42% Potassium phosphate, 0.87% Sodium chloride, pH 7.3, 30% glycerol, and 0.01% sodium azide.
Alternative Names	Sodium/potassium-transporting ATPase subunit beta-2; Adhesion molecule in glia; AMOG; Sodium/potassium-dependent ATPase subunit beta-2
Gene Symbol	ATP1B2
Entrez Gene	482(Human); 11932(Mouse)
SwissProt	P14415(Human); P14231(Mouse); P13638(Rat)

\*AREX continuously optimizes our products. Webpage content may not reflect the latest updates. For inquiries, please contact [info@arexbio.com](mailto:info@arexbio.com) or your local distributor.

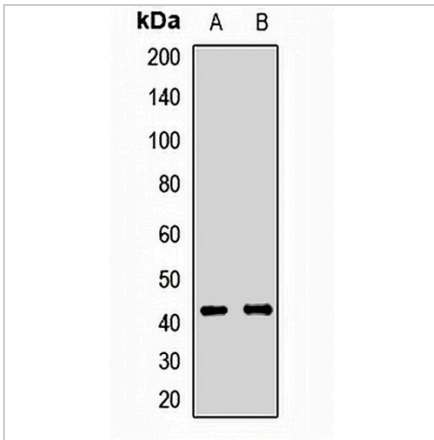
\*Clone Number, Reactivity, Source/Host and Clonality can be found in the product name and Key Features section above.

**DATASHEET**

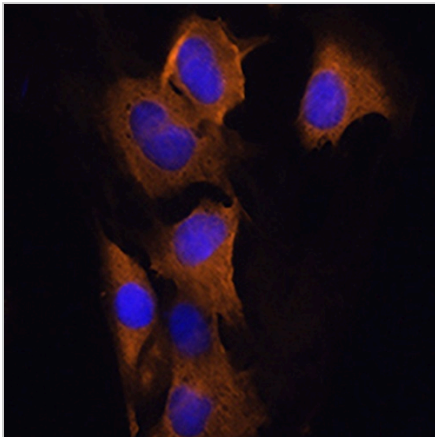
**ATP1B2 Rabbit Polyclonal Antibody**

CAT. NO. APA14935

**DATA**



Western blot analysis of ATP1B2 expression in HepG2 (A), SHSY5Y (B) whole cell lysates. (Predicted band size: 33 kD; Observed band size: 42 kD)



Immunofluorescent analysis of ATP1B2 staining in C6 cells. Formalin-fixed cells were permeabilized with 0.1% Triton X-100 in TBS for 5-10 minutes and blocked with 3% BSA-PBS for 30 minutes at room temperature. Cells were probed with the primary antibody in 3% BSA-PBS and incubated overnight at 4 °C in a humidified chamber. Cells were washed with PBST and incubated with a AREX® Fluor 594-conjugated secondary antibody (red) in PBS at room temperature in the dark. DAPI was used to stain the cell nuclei (blue).

**STORAGE**

Store at 4°C short term. For long term storage, store at -20°C, avoiding freeze/thaw cycles.

**NOTE**

For Research Use Only. Not for diagnostic, therapeutics, prophylactic or in vivo use.