

**DATASHEET**

**GLDC Rabbit Polyclonal Antibody**

CAT. NO. APA14937

**KEY FEATURES**

Target	GLDC	Source / Host	Rabbit
Reactivity	Human, Mouse	Clonality	Polyclonal
Applications	WB, IHC, IF/ICC	Conjugation	Unconjugated
Form / Buffer	Liquid in 0.42% Potassium phosphate, 0.87% Sodium chloride, pH 7.3, 30% glycerol, and 0.01% sodium azide.		Storage at -20°C

**BACKGROUND**

The glycine cleavage system catalyzes the degradation of glycine. The P protein (GLDC) binds the alpha-amino group of glycine through its pyridoxal phosphate cofactor; CO(2) is released and the remaining methylamine moiety is then transferred to the lipoamide cofactor of the H protein (GCSH).

**APPLICATION**

To ensure optimal assay performance, AREX recommends conducting reagent titration tailored to each testing system for optimal detection results.

WB	1:500 - 1:2000
IHC	1:50 - 1:200
IF/ICC	1:50 - 1:200

\*Results are sample-specific. Please refer to your local assay conditions and test parameters for reference.

**PRODUCT OVERVIEW**

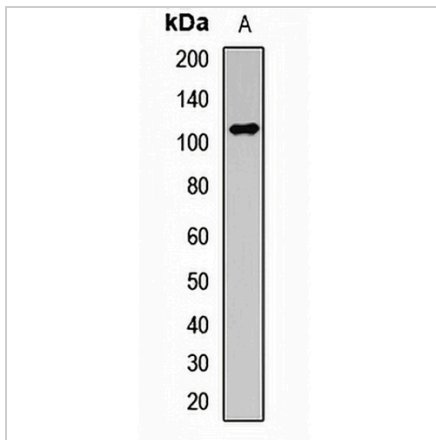
Description	Rabbit polyclonal antibody to GLDC
Specificity	Recognizes endogenous levels of GLDC protein.
Antibody Type	Primary antibody
Immunogen	Recombinant fusion protein of human GLDC
Purification	The antibody was purified by immunogen affinity chromatography.
Molecular Weight	Predicted: 112 kD; Observed: 113 kD
Form/Buffer	Liquid in 0.42% Potassium phosphate, 0.87% Sodium chloride, pH 7.3, 30% glycerol, and 0.01% sodium azide.
Alternative Names	GCSP; Glycine dehydrogenase (decarboxylating) mitochondrial; Glycine cleavage system P protein; Glycine decarboxylase; Glycine dehydrogenase (aminomethyl-transferring)
Gene Symbol	GLDC
Entrez Gene	2731(Human); 104174(Mouse)
SwissProt	P23378(Human); Q91W43(Mouse)

\*AREX continuously optimizes our products. Webpage content may not reflect the latest updates. For inquiries, please contact [info@arexbio.com](mailto:info@arexbio.com) or your local distributor.

\*Clone Number, Reactivity, Source/Host and Clonality can be found in the product name and Key Features section above.

**DATASHEET****GLDC Rabbit Polyclonal Antibody**

CAT. NO. APA14937

**DATA**

Western blot analysis of GLDC expression in HepG2 (A) whole cell lysates. (Predicted band size: 112 kD; Observed band size: 113 kD)

**STORAGE**

Store at 4°C short term. For long term storage, store at -20°C, avoiding freeze/thaw cycles.

**NOTE**

For Research Use Only. Not for diagnostic, therapeutics, prophylactic or in vivo use.