

DATASHEET

PI6 Rabbit Polyclonal Antibody

CAT. NO. APA14942

KEY FEATURES

Target	PI6	Source / Host	Rabbit
Reactivity	Human, Mouse	Clonality	Polyclonal
Applications	WB	Conjugation	Unconjugated
Form / Buffer	Liquid in 0.42% Potassium phosphate, 0.87% Sodium chloride, pH 7.3, 30% glycerol, and 0.01% sodium azide.		Storage at -20°C

BACKGROUND

May be involved in the regulation of serine proteinases present in the brain or extravasated from the blood. Inhibitor of cathepsin G, kallikrein-8 and thrombin. May play an important role in the inner ear in the protection against leakage of lysosomal content during stress and loss of this protection results in cell death and sensorineural hearing loss.

APPLICATION

To ensure optimal assay performance, AREX recommends conducting reagent titration tailored to each testing system for optimal detection results.

WB	1:500 - 1:2000
----	----------------

*Results are sample-specific. Please refer to your local assay conditions and test parameters for reference.

PRODUCT OVERVIEW

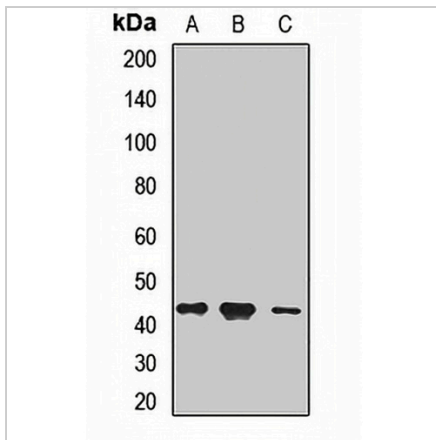
Description	Rabbit polyclonal antibody to PI6
Specificity	Recognizes endogenous levels of PI6 protein.
Antibody Type	Primary antibody
Immunogen	Recombinant fusion protein of human PI6
Purification	The antibody was purified by immunogen affinity chromatography.
Molecular Weight	Predicted: 42 kD; Observed: 42 kD
Form/Buffer	Liquid in 0.42% Potassium phosphate, 0.87% Sodium chloride, pH 7.3, 30% glycerol, and 0.01% sodium azide.
Alternative Names	PI6; PTI; Serpin B6; Cytoplasmic antiproteinase; CAP; Peptidase inhibitor 6; PI-6; Placental thrombin inhibitor
Gene Symbol	SERPINB6
Entrez Gene	5269(Human)
SwissProt	P35237(Human)

*AREX continuously optimizes our products. Webpage content may not reflect the latest updates. For inquiries, please contact info@arexbio.com or your local distributor.

*Clone Number, Reactivity, Source/Host and Clonality can be found in the product name and Key Features section above.

DATASHEET**PI6 Rabbit Polyclonal Antibody**

CAT. NO. APA14942

DATA

Western blot analysis of PI6 expression in HeLa (A), HepG2 (B), MCF7 (C) whole cell lysates.
(Predicted band size: 42 kD; Observed band size: 42 kD)

STORAGE

Store at 4°C short term. For long term storage, store at -20°C, avoiding freeze/thaw cycles.

NOTE

For Research Use Only. Not for diagnostic, therapeutics, prophylactic or in vivo use.