

**DATASHEET**

**Alpha-2-antiplasmin Rabbit Polyclonal Antibody**

CAT. NO. APA14943

**KEY FEATURES**

Target	Alpha-2-antiplasmin	Source / Host	Rabbit
Reactivity	Human, Mouse, Rat	Clonality	Polyclonal
Applications	WB, IHC	Conjugation	Unconjugated
Form / Buffer	Liquid in 0.42% Potassium phosphate, 0.87% Sodium chloride, pH 7.3, 30% glycerol, and 0.01% sodium azide.	Storage	at-20°C

**BACKGROUND**

Serine protease inhibitor. The major targets of this inhibitor are plasmin and trypsin, but it also inactivates matriptase-3/TMPRSS7 and chymotrypsin.

**APPLICATION**

To ensure optimal assay performance, AREX recommends conducting reagent titration tailored to each testing system for optimal detection results.

WB	1:500 - 1:2000
IHC	1:50 - 1:200

\*Results are sample-specific. Please refer to your local assay conditions and test parameters for reference.

**PRODUCT OVERVIEW**

Description	Rabbit polyclonal antibody to Alpha-2-antiplasmin
Specificity	Recognizes endogenous levels of Alpha-2-antiplasmin protein.
Antibody Type	Primary antibody
Immunogen	Recombinant fusion protein of human Alpha-2-antiplasmin
Purification	The antibody was purified by immunogen affinity chromatography.
Molecular Weight	Predicted: 47; Observed: 55 kD
Form/Buffer	Liquid in 0.42% Potassium phosphate, 0.87% Sodium chloride, pH 7.3, 30% glycerol, and 0.01% sodium azide.
Alternative Names	AAP; PLI; Alpha-2-antiplasmin; Alpha-2-AP; Alpha-2-plasmin inhibitor; Alpha-2-PI; Serpin F2
Gene Symbol	SERPINF2
Entrez Gene	5345(Human); 18816(Mouse)
SwissProt	P08697(Human); Q61247(Mouse)

\*AREX continuously optimizes our products. Webpage content may not reflect the latest updates. For inquiries, please contact [info@arexbio.com](mailto:info@arexbio.com) or your local distributor.

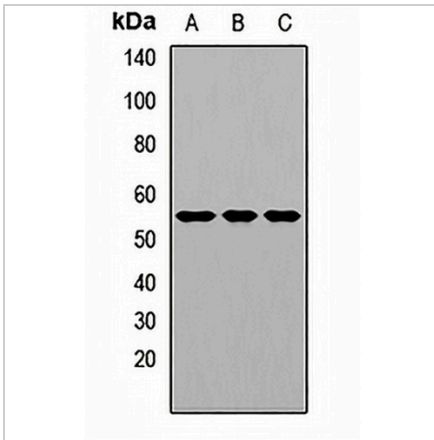
\*Clone Number, Reactivity, Source/Host and Clonality can be found in the product name and Key Features section above.

**DATASHEET**

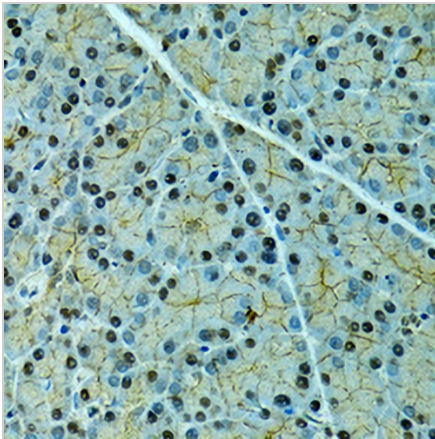
**Alpha-2-antiplasmin Rabbit Polyclonal Antibody**

CAT. NO. APA14943

**DATA**



Western blot analysis of Alpha-2-antiplasmin expression in HepG2 (A), A549 (B), rat liver (C) whole cell lysates. (Predicted band size: 47; 54 kD; Observed band size: 55 kD)



Immunohistochemical analysis of Alpha-2-antiplasmin staining in rat pancreas formalin fixed paraffin embedded tissue section. The section was pre-treated using heat mediated antigen retrieval with sodium citrate buffer (pH 6.0). The section was then incubated with the antibody at room temperature and detected using an HRP conjugated compact polymer system. DAB was used as the chromogen. The section was then counterstained with haematoxylin and mounted with DPX.

**STORAGE**

Store at 4°C short term. For long term storage, store at -20°C, avoiding freeze/thaw cycles.

**NOTE**

For Research Use Only. Not for diagnostic, therapeutics, prophylactic or in vivo use.