

**DATASHEET**

**PMPCA Rabbit Polyclonal Antibody**

CAT. NO. APA14948

**KEY FEATURES**

Target	PMPCA	Source / Host	Rabbit
Reactivity	Human, Mouse, Rat	Clonality	Polyclonal
Applications	WB	Conjugation	Unconjugated
Form / Buffer	Liquid in 0.42% Potassium phosphate, 0.87% Sodium chloride, pH 7.3, 30% glycerol, and 0.01% sodium azide.		Storage at-20°C

**BACKGROUND**

Substrate recognition and binding subunit of the essential mitochondrial processing protease (MPP), which cleaves the mitochondrial sequence off newly imported precursors proteins.

**APPLICATION**

To ensure optimal assay performance, AREX recommends conducting reagent titration tailored to each testing system for optimal detection results.

WB	1:500 - 1:2000
----	----------------

\*Results are sample-specific. Please refer to your local assay conditions and test parameters for reference.

**PRODUCT OVERVIEW**

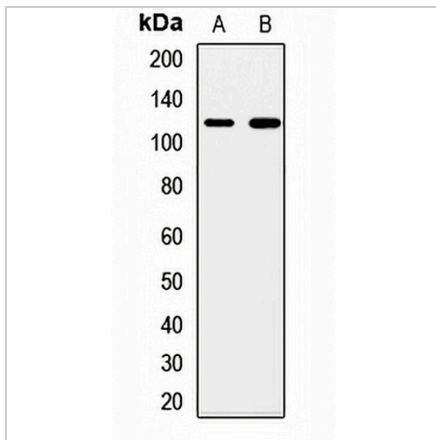
Description	Rabbit polyclonal antibody to PMPCA
Specificity	Recognizes endogenous levels of PMPCA protein.
Antibody Type	Primary antibody
Immunogen	Recombinant fusion protein of human PMPCA
Purification	The antibody was purified by immunogen affinity chromatography.
Molecular Weight	Predicted: 44; Observed: 110 kD
Form/Buffer	Liquid in 0.42% Potassium phosphate, 0.87% Sodium chloride, pH 7.3, 30% glycerol, and 0.01% sodium azide.
Alternative Names	INPP5E; KIAA0123; MPPA; Mitochondrial-processing peptidase subunit alpha; Alpha-MPP; P-55
Gene Symbol	PMPCA
Entrez Gene	23203(Human); 66865(Mouse)
SwissProt	Q10713(Human); Q9DC61(Mouse); P20069(Rat)

\*AREX continuously optimizes our products. Webpage content may not reflect the latest updates. For inquiries, please contact [info@arexbio.com](mailto:info@arexbio.com) or your local distributor.

\*Clone Number, Reactivity, Source/Host and Clonality can be found in the product name and Key Features section above.

**DATASHEET****PMPCA Rabbit Polyclonal Antibody**

CAT. NO. APA14948

**DATA**

Western blot analysis of PMPCA expression in MCF7 (A), HeLa (B) whole cell lysates. (Predicted band size: 44; 58 kD; Observed band size: 110 kD)

**STORAGE**

Store at 4°C short term. For long term storage, store at -20°C, avoiding freeze/thaw cycles.

**NOTE**

For Research Use Only. Not for diagnostic, therapeutics, prophylactic or in vivo use.