

**DATASHEET**

**CSPP1 Rabbit Polyclonal Antibody**

CAT. NO. APA14954

**KEY FEATURES**

Target	CSPP1	Source / Host	Rabbit
Reactivity	Human, Mouse, Rat	Clonality	Polyclonal
Applications	WB	Conjugation	Unconjugated
Form / Buffer	Liquid in 0.42% Potassium phosphate, 0.87% Sodium chloride, pH 7.3, 30% glycerol, and 0.01% sodium azide.		Storage at -20°C

**BACKGROUND**

May play a role in cell-cycle-dependent microtubule organization.

**APPLICATION**

To ensure optimal assay performance, AREX recommends conducting reagent titration tailored to each testing system for optimal detection results.

WB	1:500 - 1:2000
----	----------------

\*Results are sample-specific. Please refer to your local assay conditions and test parameters for reference.

**PRODUCT OVERVIEW**

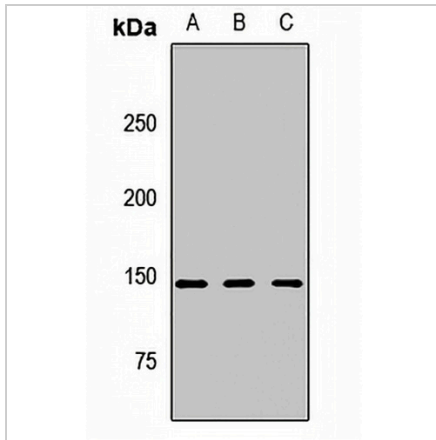
Description	Rabbit polyclonal antibody to CSPP1
Specificity	Recognizes endogenous levels of CSPP1 protein.
Antibody Type	Primary antibody
Immunogen	Recombinant fusion protein of human CSPP1
Purification	The antibody was purified by immunogen affinity chromatography.
Molecular Weight	Predicted: 101; Observed: 145 kD
Form/Buffer	Liquid in 0.42% Potassium phosphate, 0.87% Sodium chloride, pH 7.3, 30% glycerol, and 0.01% sodium azide.
Alternative Names	CSPP; Centrosome and spindle pole-associated protein 1
Gene Symbol	CSPP1
Entrez Gene	79848(Human); 211660(Mouse)
SwissProt	Q1MSJ5(Human); B2RX88(Mouse)

\*AREX continuously optimizes our products. Webpage content may not reflect the latest updates. For inquiries, please contact [info@arexbio.com](mailto:info@arexbio.com) or your local distributor.

\*Clone Number, Reactivity, Source/Host and Clonality can be found in the product name and Key Features section above.

**DATASHEET****CSPP1 Rabbit Polyclonal Antibody**

CAT. NO. APA14954

**DATA****STORAGE**

Store at 4°C short term. For long term storage, store at -20°C, avoiding freeze/thaw cycles.

**NOTE**

For Research Use Only. Not for diagnostic, therapeutics, prophylactic or in vivo use.