

DATASHEET

SETD7 Rabbit Polyclonal Antibody

CAT. NO. APA14955

KEY FEATURES

Target	SETD7	Source / Host	Rabbit
Reactivity	Human, Mouse, Rat	Clonality	Polyclonal
Applications	WB, IF/ICC	Conjugation	Unconjugated
Form / Buffer	Liquid in 0.42% Potassium phosphate, 0.87% Sodium chloride, pH 7.3, 30% glycerol, and 0.01% sodium azide.		Storage at -20°C

BACKGROUND

Histone methyltransferase that specifically monomethylates 'Lys-4' of histone H3 . H3 'Lys-4' methylation represents a specific tag for epigenetic transcriptional activation . Plays a central role in the transcriptional activation of genes such as collagenase or insulin . Recruited by IPF1/PDX-1 to the insulin promoter, leading to activate transcription . Also has methyltransferase activity toward non-histone proteins such as CGAS, p53/TP53, TAF10, and possibly TAF7 by recognizing and binding the [KR]-[STA]-K in substrate proteins . Monomethylates 'Lys-189' of TAF10, leading to increase the affinity of TAF10 for RNA polymerase II . Monomethylates 'Lys-372' of p53/TP53, stabilizing p53/TP53 and increasing p53/TP53-mediated transcriptional activation .

APPLICATION

To ensure optimal assay performance, AREX recommends conducting reagent titration tailored to each testing system for optimal detection results.

WB	1:500 - 1:2000
IF/ICC	1:50 - 1:200

*Results are sample-specific. Please refer to your local assay conditions and test parameters for reference.

PRODUCT OVERVIEW

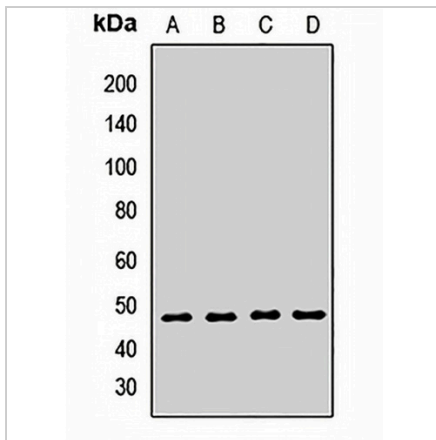
Description	Rabbit polyclonal antibody to SETD7
Specificity	Recognizes endogenous levels of SETD7 protein.
Antibody Type	Primary antibody
Immunogen	Recombinant fusion protein of human SETD7
Purification	The antibody was purified by immunogen affinity chromatography.
Molecular Weight	Predicted: 40 kD; Observed: 48 kD
Form/Buffer	Liquid in 0.42% Potassium phosphate, 0.87% Sodium chloride, pH 7.3, 30% glycerol, and 0.01% sodium azide.
Alternative Names	KIAA1717; KMT7; SET7; SET9; Histone-lysine N-methyltransferase SETD7; Histone H3-K4 methyltransferase SETD7; H3-K4-HMTase SETD7; Lysine N-methyltransferase 7; SET domain-containing protein 7; SET7/9
Gene Symbol	SETD7
Entrez Gene	80854(Human); 73251(Mouse)
SwissProt	Q8WTS6(Human); Q8VHL1(Mouse)

*AREX continuously optimizes our products. Webpage content may not reflect the latest updates. For inquiries, please contact info@arexbio.com or your local distributor.

*Clone Number, Reactivity, Source/Host and Clonality can be found in the product name and Key Features section above.

DATASHEET**SETD7 Rabbit Polyclonal Antibody**

CAT. NO. APA14955

DATA

Western blot analysis of SETD7 expression in Hela (A), HepG2 (B), mouse brain (C), rat brain (D) whole cell lysates. (Predicted band size: 40 kD; Observed band size: 48 kD)

STORAGE

Store at 4°C short term. For long term storage, store at -20°C, avoiding freeze/thaw cycles.

NOTE

For Research Use Only. Not for diagnostic, therapeutics, prophylactic or in vivo use.