

DATASHEET

UBE2Q2 Rabbit Polyclonal Antibody

CAT. NO. APA14956

KEY FEATURES

Target	UBE2Q2	Source / Host	Rabbit
Reactivity	Human, Mouse	Clonality	Polyclonal
Applications	WB, IF/ICC	Conjugation	Unconjugated
Form / Buffer	Liquid in 0.42% Potassium phosphate, 0.87% Sodium chloride, pH 7.3, 30% glycerol, and 0.01% sodium azide.		Storage at -20°C

BACKGROUND

Accepts ubiquitin from the E1 complex and catalyzes its covalent attachment to other proteins. In vitro catalyzes 'Lys-48'-linked polyubiquitination.

APPLICATION

To ensure optimal assay performance, AREX recommends conducting reagent titration tailored to each testing system for optimal detection results.

WB	1:500 - 1:2000
IF/ICC	1:50 - 1:200

*Results are sample-specific. Please refer to your local assay conditions and test parameters for reference.

PRODUCT OVERVIEW

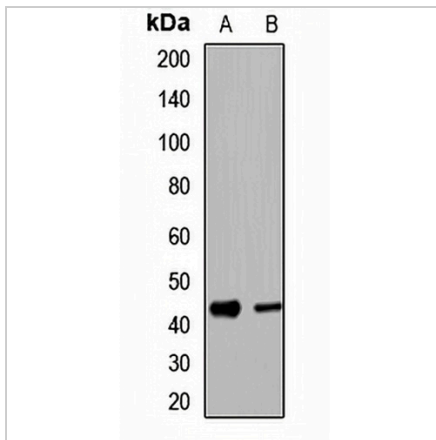
Description	Rabbit polyclonal antibody to UBE2Q2
Specificity	Recognizes endogenous levels of UBE2Q2 protein.
Antibody Type	Primary antibody
Immunogen	Recombinant fusion protein of human UBE2Q2
Purification	The antibody was purified by immunogen affinity chromatography.
Molecular Weight	Predicted: 36; Observed: 43 kD
Form/Buffer	Liquid in 0.42% Potassium phosphate, 0.87% Sodium chloride, pH 7.3, 30% glycerol, and 0.01% sodium azide.
Alternative Names	Ubiquitin-conjugating enzyme E2 Q2; Ubiquitin carrier protein Q2; Ubiquitin-protein ligase Q2
Gene Symbol	UBE2Q2
Entrez Gene	92912(Human); 109161(Mouse)
SwissProt	Q8WVN8(Human); Q8K2Z8(Mouse)

*AREX continuously optimizes our products. Webpage content may not reflect the latest updates. For inquiries, please contact info@arexbio.com or your local distributor.

*Clone Number, Reactivity, Source/Host and Clonality can be found in the product name and Key Features section above.

DATASHEET**UBE2Q2 Rabbit Polyclonal Antibody**

CAT. NO. APA14956

DATA

Western blot analysis of UBE2Q2 expression in HeLa (A), A549 (B) whole cell lysates. (Predicted band size: 36; 38; 40; 42 kD; Observed band size: 43 kD)

STORAGE

Store at 4°C short term. For long term storage, store at -20°C, avoiding freeze/thaw cycles.

NOTE

For Research Use Only. Not for diagnostic, therapeutics, prophylactic or in vivo use.