

DATASHEET

MYL6B Rabbit Polyclonal Antibody

CAT. NO. APA14959

KEY FEATURES

Target	MYL6B	Source / Host	Rabbit
Reactivity	Human, Mouse, Rat	Clonality	Polyclonal
Applications	WB	Conjugation	Unconjugated
Form / Buffer	Liquid in 0.42% Potassium phosphate, 0.87% Sodium chloride, pH 7.3, 30% glycerol, and 0.01% sodium azide.		Storage at -20°C

BACKGROUND

Regulatory light chain of myosin. Does not bind calcium.

APPLICATION

To ensure optimal assay performance, AREX recommends conducting reagent titration tailored to each testing system for optimal detection results.

WB	1:500 - 1:2000
----	----------------

*Results are sample-specific. Please refer to your local assay conditions and test parameters for reference.

PRODUCT OVERVIEW

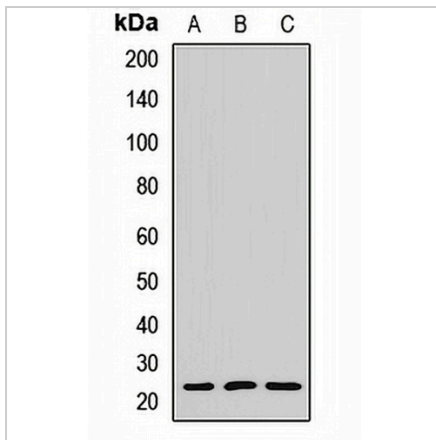
Description	Rabbit polyclonal antibody to MYL6B
Specificity	Recognizes endogenous levels of MYL6B protein.
Antibody Type	Primary antibody
Immunogen	Recombinant fusion protein of human MYL6B
Purification	The antibody was purified by immunogen affinity chromatography.
Molecular Weight	Predicted: 22 kD; Observed: 26 kD
Form/Buffer	Liquid in 0.42% Potassium phosphate, 0.87% Sodium chloride, pH 7.3, 30% glycerol, and 0.01% sodium azide.
Alternative Names	MLC1SA; Myosin light chain 6B; Myosin light chain 1 slow-twitch muscle A isoform; MLC1sa; Smooth muscle and nonmuscle myosin light chain alkali 6B
Gene Symbol	MYL6B
Entrez Gene	140465(Human); 216459(Mouse)
SwissProt	P14649(Human); Q8CI43(Mouse)

*AREX continuously optimizes our products. Webpage content may not reflect the latest updates. For inquiries, please contact info@arexbio.com or your local distributor.

*Clone Number, Reactivity, Source/Host and Clonality can be found in the product name and Key Features section above.

DATASHEET**MYL6B Rabbit Polyclonal Antibody**

CAT. NO. APA14959

DATA

Western blot analysis of MYL6B expression in SKOV3 (A), mouse brain (B), rat brain (C) whole cell lysates. (Predicted band size: 22 kD; Observed band size: 26 kD)

STORAGE

Store at 4°C short term. For long term storage, store at -20°C, avoiding freeze/thaw cycles.

NOTE

For Research Use Only. Not for diagnostic, therapeutics, prophylactic or in vivo use.