

DATASHEET

GLUT2 Rabbit Polyclonal Antibody

CAT. NO. APA14961

KEY FEATURES

Target	GLUT2	Source / Host	Rabbit
Reactivity	Human, Mouse, Rat	Clonality	Polyclonal
Applications	WB	Conjugation	Unconjugated
Form / Buffer	Liquid in 0.42% Potassium phosphate, 0.87% Sodium chloride, pH 7.3, 30% glycerol, and 0.01% sodium azide.		Storage at-20°C

BACKGROUND

Facilitative hexose transporter that mediates the transport of glucose, fructose and galactose . Likely mediates the bidirectional transfer of glucose across the plasma membrane of hepatocytes and is responsible for uptake of glucose by the beta cells; may comprise part of the glucose-sensing mechanism of beta cells . May also participate with the Na(+)/glucose cotransporter in the transcellular transport of glucose in the small intestine and kidney . Also able to mediate the transport of dehydroascorbate and urate .

APPLICATION

To ensure optimal assay performance, AREX recommends conducting reagent titration tailored to each testing system for optimal detection results.

WB	1:500 - 1:1000
----	----------------

*Results are sample-specific. Please refer to your local assay conditions and test parameters for reference.

PRODUCT OVERVIEW

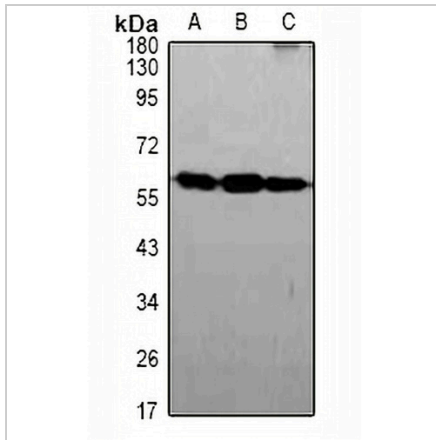
Description	Rabbit polyclonal antibody to GLUT2
Specificity	Recognizes endogenous levels of GLUT2 protein.
Antibody Type	Primary antibody
Immunogen	KLH-conjugated synthetic peptide encompassing a sequence within human GLUT2. The exact sequence is proprietary.
Purification	The antibody was purified by immunogen affinity chromatography.
Molecular Weight	Predicted: 44; Observed: 57 kD
Form/Buffer	Liquid in 0.42% Potassium phosphate, 0.87% Sodium chloride, pH 7.3, 30% glycerol, and 0.01% sodium azide.
Alternative Names	GLUT2; Solute carrier family 2, facilitated glucose transporter member 2; Glucose transporter type 2, liver; GLUT-2
Gene Symbol	SLC2A2
Entrez Gene	6514(Human); 20526(Mouse)
SwissProt	P11168(Human); P14246(Mouse); P12336(Rat)

*AREX continuously optimizes our products. Webpage content may not reflect the latest updates. For inquiries, please contact info@arexbio.com or your local distributor.

*Clone Number, Reactivity, Source/Host and Clonality can be found in the product name and Key Features section above.

DATASHEET**GLUT2 Rabbit Polyclonal Antibody**

CAT. NO. APA14961

DATA

Western blot analysis of GLUT2 expression in SW480 (A), mouse liver (B), rat liver (C) whole cell lysates. (Predicted band size: 44; 57 kD; Observed band size: 57 kD)

STORAGE

Store at 4°C short term. For long term storage, store at -20°C, avoiding freeze/thaw cycles.

NOTE

For Research Use Only. Not for diagnostic, therapeutics, prophylactic or in vivo use.