

**DATASHEET**

**Estrogen Receptor beta Rabbit Polyclonal Antibody**

CAT. NO. APA14965

**KEY FEATURES**

Target	Estrogen Receptor beta	Source / Host	Rabbit
Reactivity	Human, Mouse, Rat	Clonality	Polyclonal
Applications	WB	Conjugation	Unconjugated
Form / Buffer	Liquid in 0.42% Potassium phosphate, 0.87% Sodium chloride, pH 7.3, 30% glycerol, and 0.01% sodium azide.	Storage	at-20°C

**BACKGROUND**

Nuclear hormone receptor. Binds estrogens with an affinity similar to that of ESR1/ER-alpha, and activates expression of reporter genes containing estrogen response elements (ERE) in an estrogen-dependent manner in an estrogen-dependent manner .

**APPLICATION**

To ensure optimal assay performance, AREX recommends conducting reagent titration tailored to each testing system for optimal detection results.

WB	1:500 - 1:1000
----	----------------

\*Results are sample-specific. Please refer to your local assay conditions and test parameters for reference.

**PRODUCT OVERVIEW**

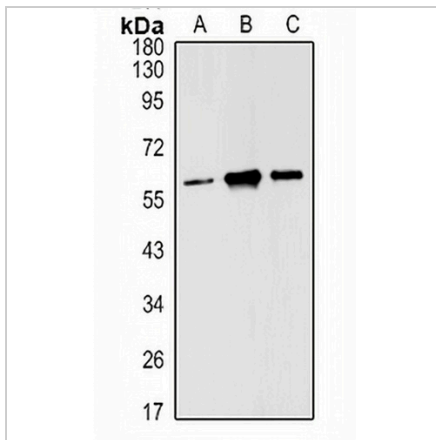
Description	Rabbit polyclonal antibody to Estrogen Receptor beta
Specificity	Recognizes endogenous levels of Estrogen Receptor beta protein.
Antibody Type	Primary antibody
Immunogen	Recombinant fusion protein of human Estrogen Receptor beta. The exact sequence is proprietary.
Purification	The antibody was purified by immunogen affinity chromatography.
Molecular Weight	Predicted: 35-59 kD; Observed: 55 kD
Form/Buffer	Liquid in 0.42% Potassium phosphate, 0.87% Sodium chloride, pH 7.3, 30% glycerol, and 0.01% sodium azide.
Alternative Names	ESTRB; NR3A2; Estrogen receptor beta; ER-beta; Nuclear receptor subfamily 3 group A member 2
Gene Symbol	ESR2
Entrez Gene	2100(Human); 13983(Mouse); 25149(Rat)
SwissProt	Q92731(Human); O08537(Mouse); Q62986(Rat)

\*AREX continuously optimizes our products. Webpage content may not reflect the latest updates. For inquiries, please contact [info@arexbio.com](mailto:info@arexbio.com) or your local distributor.

\*Clone Number, Reactivity, Source/Host and Clonality can be found in the product name and Key Features section above.

**DATASHEET****Estrogen Receptor beta Rabbit Polyclonal Antibody**

CAT. NO. APA14965

**DATA**

Western blot analysis of Estrogen Receptor beta expression in MCF7 (A), mouse ovary (B), rat ovary (C) whole cell lysates. (Predicted band size: 35-59 kD; Observed band size: 55 kD)

**STORAGE**

Store at 4°C short term. For long term storage, store at -20°C, avoiding freeze/thaw cycles.

**NOTE**

For Research Use Only. Not for diagnostic, therapeutics, prophylactic or in vivo use.