

DATASHEET

Ferroportin-1 Rabbit Polyclonal Antibody

CAT. NO. APA14966

KEY FEATURES

| | | | |
|---------------|---|---------------|--------------------|
| Target | Ferroportin-1 | Source / Host | Rabbit |
| Reactivity | Human, Mouse, Rat | Clonality | Polyclonal |
| Applications | WB | Conjugation | Unconjugated |
| Form / Buffer | Liquid in 0.42% Potassium phosphate, 0.87% Sodium chloride, pH 7.3, 30% glycerol, and 0.01% sodium azide. | | Storage at-20°C |

BACKGROUND

Transports Fe(2+) from the inside of a cell to the outside of the cell, playing a key role for maintaining systemic iron homeostasis from the inside of a cell to the outside of the cell, playing a key role for maintaining systemic iron homeostasis . Transports iron from intestinal, splenic, hepatic cells, macrophages and erythrocytes into the blood to provide iron to other tissues . Controls therefore dietary iron uptake, iron recycling by macrophages and erythrocytes, and release of iron stores in hepatocytes . When iron is in excess in serum, circulating HAMP/hepcidin levels increase resulting in a degradation of SLC40A1, thus limiting the iron efflux to plasma .

APPLICATION

To ensure optimal assay performance, AREX recommends conducting reagent titration tailored to each testing system for optimal detection results.

| | |
|----|----------------|
| WB | 1:500 - 1:2000 |
|----|----------------|

*Results are sample-specific. Please refer to your local assay conditions and test parameters for reference.

PRODUCT OVERVIEW

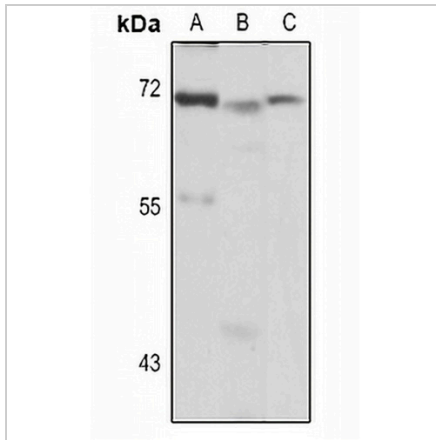
| | |
|-------------------|---|
| Description | Rabbit polyclonal antibody to Ferroportin-1 |
| Specificity | Recognizes endogenous levels of Ferroportin-1 protein. |
| Antibody Type | Primary antibody |
| Immunogen | KLH-conjugated synthetic peptide of human Ferroportin-1. The exact sequence is proprietary. |
| Purification | The antibody was purified by immunogen affinity chromatography. |
| Molecular Weight | Predicted: 62 kD; Observed: 63 kD |
| Form/Buffer | Liquid in 0.42% Potassium phosphate, 0.87% Sodium chloride, pH 7.3, 30% glycerol, and 0.01% sodium azide. |
| Alternative Names | FPN1; IREG1; SLC11A3; Solute carrier family 40 member 1; Ferroportin-1; Iron-regulated transporter 1 |
| Gene Symbol | SLC40A1 |
| Entrez Gene | 30061(Human); 53945(Mouse); 170840(Rat) |
| SwissProt | Q9NP59(Human); Q9JHI9(Mouse); Q923U9(Rat) |

*AREX continuously optimizes our products. Webpage content may not reflect the latest updates. For inquiries, please contact info@arexbio.com or your local distributor.

*Clone Number, Reactivity, Source/Host and Clonality can be found in the product name and Key Features section above.

DATASHEET**Ferroportin-1 Rabbit Polyclonal Antibody**

CAT. NO. APA14966

DATA

Western blot analysis of Ferroportin-1 expression in HeLa (A), mouse liver (B), rat liver (C) whole cell lysates. (Predicted band size: 62 kD; Observed band size: 63 kD)

STORAGE

Store at 4°C short term. For long term storage, store at -20°C, avoiding freeze/thaw cycles.

NOTE

For Research Use Only. Not for diagnostic, therapeutics, prophylactic or in vivo use.