

DATASHEET

CD19 Rabbit Polyclonal Antibody

CAT. NO. APA14967

KEY FEATURES

Target	CD19	Source / Host	Rabbit
Reactivity	Human, Mouse, Rat	Clonality	Polyclonal
Applications	WB, IF/ICC	Conjugation	Unconjugated
Form / Buffer	Liquid in 0.42% Potassium phosphate, 0.87% Sodium chloride, pH 7.3, 30% glycerol, and 0.01% sodium azide.		Storage at-20°C

BACKGROUND

Functions as a coreceptor for the B-cell antigen receptor complex (BCR) on B-lymphocytes . Decreases the threshold for activation of downstream signaling pathways and for triggering B-cell responses to antigens . Activates signaling pathways that lead to the activation of phosphatidylinositol 3-kinase and the mobilization of intracellular Ca(2+) stores . Is not required for early steps during B cell differentiation in the blood marrow . Required for normal differentiation of B-1 cells . Required for normal B cell differentiation and proliferation in response to antigen challenges . Required for normal levels of serum immunoglobulins, and for production of high-affinity antibodies in response to antigen challenge .

APPLICATION

To ensure optimal assay performance, AREX recommends conducting reagent titration tailored to each testing system for optimal detection results.

WB	1:500 - 1:1000
IF/ICC	1:50 - 1:200

*Results are sample-specific. Please refer to your local assay conditions and test parameters for reference.

PRODUCT OVERVIEW

Description	Rabbit polyclonal antibody to CD19
Specificity	Recognizes endogenous levels of CD19 protein.
Antibody Type	Primary antibody
Immunogen	Recombinant fusion protein of human CD19. The exact sequence is proprietary.
Purification	The antibody was purified by immunogen affinity chromatography.
Molecular Weight	Predicted: 61 kD; Observed: 95 kD
Form/Buffer	Liquid in 0.42% Potassium phosphate, 0.87% Sodium chloride, pH 7.3, 30% glycerol, and 0.01% sodium azide.
Alternative Names	B-lymphocyte antigen CD19; B-lymphocyte surface antigen B4; Differentiation antigen CD19; T-cell surface antigen Leu-12; CD19
Gene Symbol	CD19
Entrez Gene	930(Human); 12478(Mouse)
SwissProt	P15391(Human); P25918(Mouse)

*AREX continuously optimizes our products. Webpage content may not reflect the latest updates. For inquiries, please contact info@arexbio.com or your local distributor.

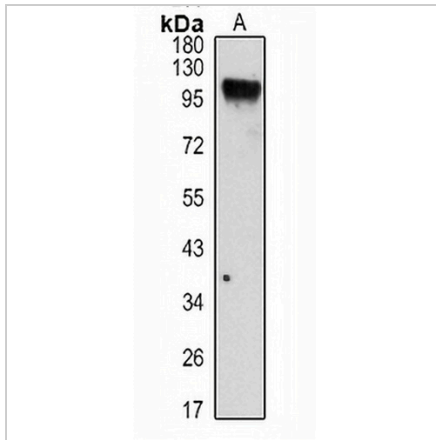
*Clone Number, Reactivity, Source/Host and Clonality can be found in the product name and Key Features section above.

DATASHEET

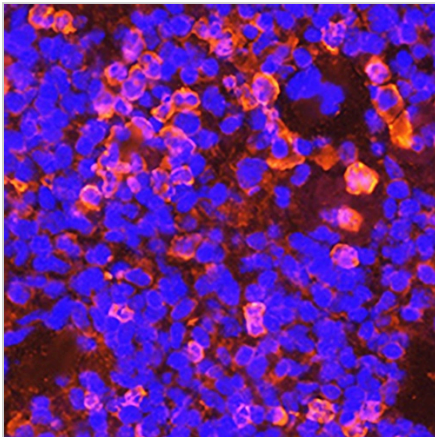
CD19 Rabbit Polyclonal Antibody

CAT. NO. APA14967

DATA



Western blot analysis of CD19 expression in Raji (A) whole cell lysates. (Predicted band size: 61 kD; Observed band size: 95 kD)



Immunofluorescent analysis of CD19 staining in mouse spleen. Formalin-fixed cells were permeabilized with 0.1% Triton X-100 in TBS for 5-10 minutes and blocked with 3% BSA-PBS for 30 minutes at room temperature. Cells were probed with the primary antibody in 3% BSA-PBS and incubated overnight at 4 °C in a humidified chamber. Cells were washed with PBST and incubated with a AREX® Fluor 594-conjugated secondary antibody (red) in PBS at room temperature in the dark. DAPI was used to stain the cell nuclei (blue).

STORAGE

Store at 4°C short term. For long term storage, store at -20°C, avoiding freeze/thaw cycles.

NOTE

For Research Use Only. Not for diagnostic, therapeutics, prophylactic or in vivo use.