

DATASHEET

MTMR9 Rabbit Polyclonal Antibody

CAT. NO. APA14968

KEY FEATURES

Target	MTMR9	Source / Host	Rabbit
Reactivity	Human, Mouse, Rat	Clonality	Polyclonal
Applications	WB, IHC, IF/ICC	Conjugation	Unconjugated
Form / Buffer	Liquid in 0.42% Potassium phosphate, 0.87% Sodium chloride, pH 7.3, 30% glycerol, and 0.01% sodium azide.		Storage at -20°C

BACKGROUND

Acts as an adapter for myotubularin-related phosphatases . Increases lipid phosphatase MTMR6 catalytic activity, specifically towards phosphatidylinositol 3,5-bisphosphate and MTMR6 binding affinity for phosphorylated phosphatidylinositols . Positively regulates lipid phosphatase MTMR7 catalytic activity . Increases MTMR8 catalytic activity towards phosphatidylinositol 3-phosphate . The formation of the MTMR6-MTMR9 complex, stabilizes both MTMR6 and MTMR9 protein levels . Stabilizes MTMR8 protein levels . Plays a role in the late stages of macropinocytosis possibly by regulating MTMR6-mediated dephosphorylation of phosphatidylinositol 3-phosphate in membrane ruffles . Negatively regulates autophagy, in part via its association with MTMR8 .

APPLICATION

To ensure optimal assay performance, AREX recommends conducting reagent titration tailored to each testing system for optimal detection results.

WB	1:500 - 1:2000
IHC	1:50 - 1:200
IF/ICC	1:50 - 1:200

*Results are sample-specific. Please refer to your local assay conditions and test parameters for reference.

PRODUCT OVERVIEW

Description	Rabbit polyclonal antibody to MTMR9
Specificity	Recognizes endogenous levels of MTMR9 protein.
Antibody Type	Primary antibody
Immunogen	Recombinant protein of human MTMR9. The exact sequence is proprietary.
Purification	The antibody was purified by immunogen affinity chromatography.
Molecular Weight	Predicted: 53; Observed: 63 kD
Form/Buffer	Liquid in 0.42% Potassium phosphate, 0.87% Sodium chloride, pH 7.3, 30% glycerol, and 0.01% sodium azide.
Alternative Names	C8orf9; MTMR8; Myotubularin-related protein 9
Gene Symbol	MTMR9
Entrez Gene	66036(Human); 210376(Mouse)
SwissProt	Q96QG7(Human); Q9Z2D0(Mouse)

*AREX continuously optimizes our products. Webpage content may not reflect the latest updates. For inquiries, please contact info@arexbio.com or your local distributor.

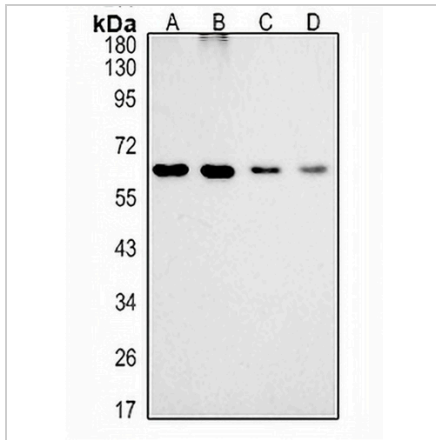
*Clone Number, Reactivity, Source/Host and Clonality can be found in the product name and Key Features section above.

DATASHEET

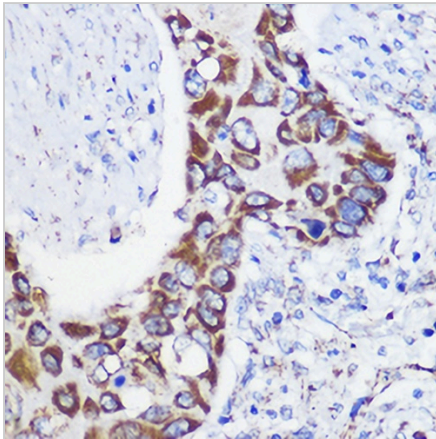
MTMR9 Rabbit Polyclonal Antibody

CAT. NO. APA14968

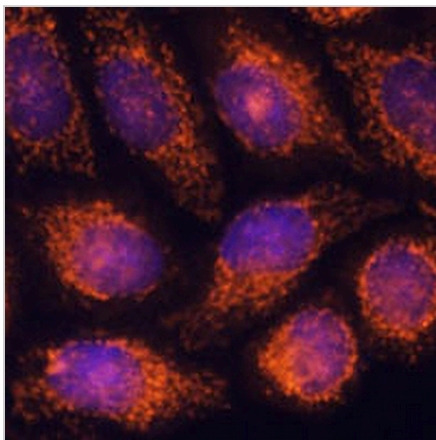
DATA



Western blot analysis of MTMR9 expression in HeLa (A), A549 (B), mouse brain (C), rat brain (D) whole cell lysates. (Predicted band size: 53; 63 kD; Observed band size: 63 kD)



Immunohistochemical analysis of MTMR9 staining in human lung cancer formalin fixed paraffin embedded tissue section. The section was pre-treated using heat mediated antigen retrieval with sodium citrate buffer (pH 6.0). The section was then incubated with the antibody at room temperature and detected using an HRP conjugated compact polymer system. DAB was used as the chromogen. The section was then counterstained with haematoxylin and mounted with DPX.



Immunofluorescent analysis of MTMR9 staining in HeLa cells. Formalin-fixed cells were permeabilized with 0.1% Triton X-100 in TBS for 5-10 minutes and blocked with 3% BSA-PBS for 30 minutes at room temperature. Cells were probed with the primary antibody in 3% BSA-PBS and incubated overnight at 4 °C in a humidified chamber. Cells were washed with PBST and incubated with a AREX® Fluor 594-conjugated secondary antibody (red) in PBS at room temperature in the dark. DAPI was used to stain the cell nuclei (blue).

STORAGE

Store at 4°C short term. For long term storage, store at -20°C, avoiding freeze/thaw cycles.

NOTE

For Research Use Only. Not for diagnostic, therapeutics, prophylactic or in vivo use.