

**DATASHEET**

**IL-25 Rabbit Polyclonal Antibody**

CAT. NO. APA14974

**KEY FEATURES**

Target	IL-25	Source / Host	Rabbit
Reactivity	Human	Clonality	Polyclonal
Applications	WB, IHC, IF/ICC	Conjugation	Unconjugated
Form / Buffer	Liquid in 0.42% Potassium phosphate, 0.87% Sodium chloride, pH 7.3, 30% glycerol, and 0.01% sodium azide.		Storage at -20°C

**BACKGROUND**

Cytokine produced by various cells such as eosinophils, T-helper type 2 (Th2) cells or epithelial cells that plays a role in internal safety of adaptive immune responses by regulating cytokine production cells or epithelial cells that plays a role in internal safety of adaptive immune responses by regulating cytokine production . Promotes and augments T-helper type 2 responses locally or systemically . Exerts its activity via its receptor composed of IL17RA and IL17RB for signal transduction . In turn, stimulates the JAK2-STAT5A pathway and promotes the secretion of type-2 associated cytokines including IL4, IL9 and IL13 . Also induces the release of IL8, and IL6 from eosinophils through the combined activation of MAPK and NF-kappa-B pathways .

**APPLICATION**

To ensure optimal assay performance, AREX recommends conducting reagent titration tailored to each testing system for optimal detection results.

WB	1:500 - 1:1000
IHC	1:100 - 1:200
IF/ICC	1:100 - 1:500

\*Results are sample-specific. Please refer to your local assay conditions and test parameters for reference.

**PRODUCT OVERVIEW**

Description	Rabbit polyclonal antibody to IL-25
Specificity	Recognizes endogenous levels of IL-25 protein.
Antibody Type	Primary antibody
Immunogen	Recombinant protein of human IL-25. The exact sequence is proprietary.
Purification	The antibody was purified by immunogen affinity chromatography.
Molecular Weight	Predicted: 20 kD; Observed: 25 kD
Form/Buffer	Liquid in 0.42% Potassium phosphate, 0.87% Sodium chloride, pH 7.3, 30% glycerol, and 0.01% sodium azide.
Alternative Names	IL17E; Interleukin-25; IL-25; Interleukin-17E; IL-17E
Gene Symbol	IL25
Entrez Gene	64806(Human)
SwissProt	Q9H293(Human)

\*AREX continuously optimizes our products. Webpage content may not reflect the latest updates. For inquiries, please contact [info@arexbio.com](mailto:info@arexbio.com) or your local distributor.

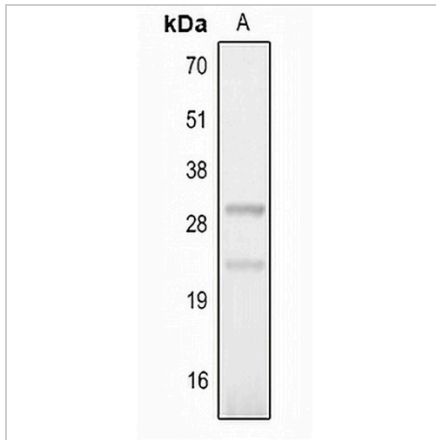
\*Clone Number, Reactivity, Source/Host and Clonality can be found in the product name and Key Features section above.

**DATASHEET**

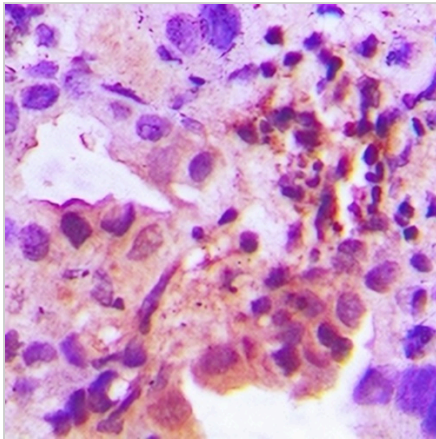
**IL-25 Rabbit Polyclonal Antibody**

CAT. NO. APA14974

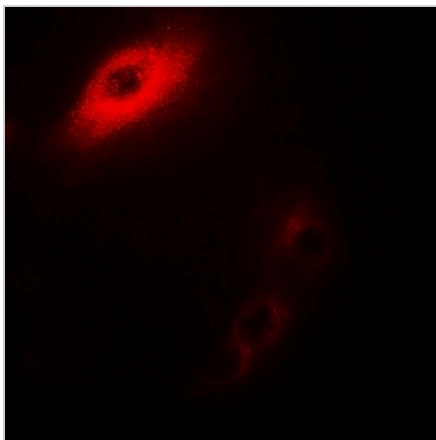
**DATA**



Western blot analysis of IL-25 expression in U937 (A) whole cell lysates. (Predicted band size: 20 kD; Observed band size: 25 kD)



Immunohistochemical analysis of IL-25 staining in human prostate formalin fixed paraffin embedded tissue section. The section was pre-treated using heat mediated antigen retrieval with sodium citrate buffer (pH 6.0). The section was then incubated with the antibody at room temperature and detected using an HRP conjugated compact polymer system. DAB was used as the chromogen. The section was then counterstained with haematoxylin and mounted with DPX.



Immunofluorescent analysis of IL-25 staining in U937 cells. Formalin-fixed cells were permeabilized with 0.1% Triton X-100 in TBS for 5-10 minutes and blocked with 3% BSA-PBS for 30 minutes at room temperature. Cells were probed with the primary antibody in 3% BSA-PBS and incubated overnight at 4 °C in a humidified chamber. Cells were washed with PBST and incubated with a Alexa Fluor 594-conjugated secondary antibody (red) in PBS at room temperature in the dark.

**STORAGE**

Store at 4°C short term. For long term storage, store at -20°C, avoiding freeze/thaw cycles.

**NOTE**

For Research Use Only. Not for diagnostic, therapeutics, prophylactic or in vivo use.