

DATASHEET

COMMD5 Rabbit Polyclonal Antibody

CAT. NO. APA14976

KEY FEATURES

Target	COMMD5	Source / Host	Rabbit
Reactivity	Human, Mouse, Rat	Clonality	Polyclonal
Applications	WB, IF/ICC	Conjugation	Unconjugated
Form / Buffer	Liquid in 0.42% Potassium phosphate, 0.87% Sodium chloride, pH 7.3, 30% glycerol, and 0.01% sodium azide.		Storage at-20°C

BACKGROUND

Scaffold protein in the commander complex that is essential for endosomal recycling of transmembrane cargos; the commander complex is composed of the CCC subcomplex and the retriever subcomplex . May modulate activity of cullin-RING E3 ubiquitin ligase (CRL) complexes . Negatively regulates cell proliferation . Negatively regulates cell cycle G2/M phase transition probably by transactivating p21/CDKN1A through the p53/TP53-independent signaling pathway . Involved in kidney proximal tubule morphogenesis . Down-regulates activation of NF-kappa-B .

APPLICATION

To ensure optimal assay performance, AREX recommends conducting reagent titration tailored to each testing system for optimal detection results.

WB	1:500 - 1:2000
IF/ICC	1:50 - 1:200

*Results are sample-specific. Please refer to your local assay conditions and test parameters for reference.

PRODUCT OVERVIEW

Description	Rabbit polyclonal antibody to COMMD5
Specificity	Recognizes endogenous levels of COMMD5 protein.
Antibody Type	Primary antibody
Immunogen	Recombinant protein of human COMMD5. The exact sequence is proprietary.
Purification	The antibody was purified by immunogen affinity chromatography.
Molecular Weight	Predicted: 24 kD; Observed: 25 kD
Form/Buffer	Liquid in 0.42% Potassium phosphate, 0.87% Sodium chloride, pH 7.3, 30% glycerol, and 0.01% sodium azide.
Alternative Names	COMM domain-containing protein 5; Hypertension-related calcium-regulated gene protein; HCaRG; HT002
Gene Symbol	COMMD5
Entrez Gene	28991(Human)
SwissProt	Q9GZQ3(Human)

*AREX continuously optimizes our products. Webpage content may not reflect the latest updates. For inquiries, please contact info@arexbio.com or your local distributor.

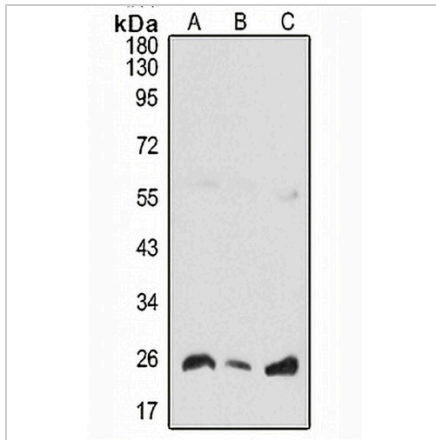
*Clone Number, Reactivity, Source/Host and Clonality can be found in the product name and Key Features section above.

DATASHEET

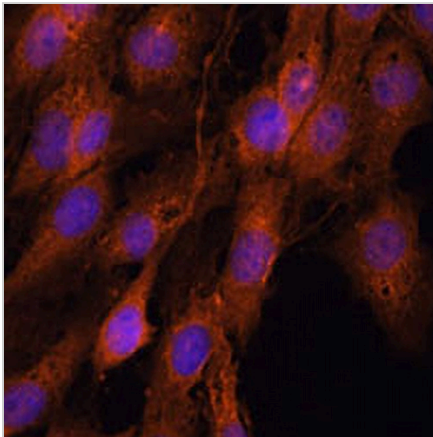
COMMD5 Rabbit Polyclonal Antibody

CAT. NO. APA14976

DATA



Western blot analysis of COMMD5 expression in HeLa (A), mouse kidney (B), rat liver (C) whole cell lysates. (Predicted band size: 24 kD; Observed band size: 25 kD)



Immunofluorescent analysis of COMMD5 staining in C6 cells. Formalin-fixed cells were permeabilized with 0.1% Triton X-100 in TBS for 5-10 minutes and blocked with 3% BSA-PBS for 30 minutes at room temperature. Cells were probed with the primary antibody in 3% BSA-PBS and incubated overnight at 4 °C in a humidified chamber. Cells were washed with PBST and incubated with a AREX® Fluor 594-conjugated secondary antibody (red) in PBS at room temperature in the dark. DAPI was used to stain the cell nuclei (blue).

STORAGE

Store at 4°C short term. For long term storage, store at -20°C, avoiding freeze/thaw cycles.

NOTE

For Research Use Only. Not for diagnostic, therapeutics, prophylactic or in vivo use.