

DATASHEET

WWP1 Rabbit Polyclonal Antibody

CAT. NO. APA14980

KEY FEATURES

Target	WWP1	Source / Host	Rabbit
Reactivity	Human, Mouse	Clonality	Polyclonal
Applications	WB	Conjugation	Unconjugated
Form / Buffer	Liquid in 0.42% Potassium phosphate, 0.87% Sodium chloride, pH 7.3, 30% glycerol, and 0.01% sodium azide.		Storage at -20°C

BACKGROUND

E3 ubiquitin-protein ligase which accepts ubiquitin from an E2 ubiquitin-conjugating enzyme in the form of a thioester and then directly transfers the ubiquitin to targeted substrates. Ubiquitinates ERBB4 isoforms JM-A CYT-1 and JM-B CYT-1, KLF2, KLF5 and TP63 and promotes their proteasomal degradation. Ubiquitinates RNF11 without targeting it for degradation. Ubiquitinates and promotes degradation of TGFBR1; the ubiquitination is enhanced by SMAD7. Ubiquitinates SMAD6 and SMAD7. Ubiquitinates and promotes degradation of SMAD2 in response to TGF-beta signaling, which requires interaction with TGIF. Activates the Hippo signaling pathway in response to cell contact inhibition and recruitment to the Crumbs complex at the cell membrane .

APPLICATION

To ensure optimal assay performance, AREX recommends conducting reagent titration tailored to each testing system for optimal detection results.

WB	1:500 - 1:1000
----	----------------

*Results are sample-specific. Please refer to your local assay conditions and test parameters for reference.

PRODUCT OVERVIEW

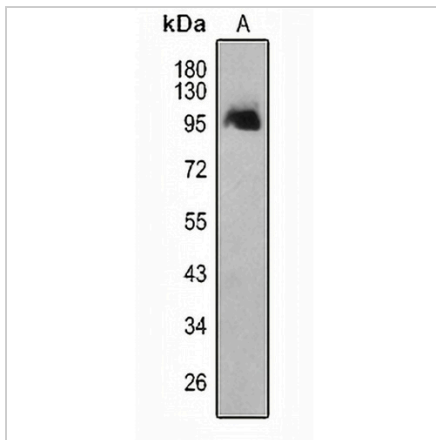
Description	Rabbit polyclonal antibody to WWP1
Specificity	Recognizes endogenous levels of WWP1 protein.
Antibody Type	Primary antibody
Immunogen	Recombinant protein of human WWP1. The exact sequence is proprietary.
Purification	The antibody was purified by immunogen affinity chromatography.
Molecular Weight	Predicted: 13; Observed: 105 kD
Form/Buffer	Liquid in 0.42% Potassium phosphate, 0.87% Sodium chloride, pH 7.3, 30% glycerol, and 0.01% sodium azide.
Alternative Names	NEDD4-like E3 ubiquitin-protein ligase WWP1; Atrophin-1-interacting protein 5; AIP5; HECT-type E3 ubiquitin transferase WWP1; TGIF-interacting ubiquitin ligase 1; Tiul1; WW domain-containing protein 1
Gene Symbol	WWP1
Entrez Gene	11059(Human); 107568(Mouse)
SwissProt	Q9H0M0(Human); Q8BZZ3(Mouse)

*AREX continuously optimizes our products. Webpage content may not reflect the latest updates. For inquiries, please contact info@arexbio.com or your local distributor.

*Clone Number, Reactivity, Source/Host and Clonality can be found in the product name and Key Features section above.

DATASHEET**WWP1 Rabbit Polyclonal Antibody**

CAT. NO. APA14980

DATA

Western blot analysis of WWP1 expression in PC3 (A) whole cell lysates. (Predicted band size: 13; 81; 91; 105 kD; Observed band size: 105 kD)

STORAGE

Store at 4°C short term. For long term storage, store at -20°C, avoiding freeze/thaw cycles.

NOTE

For Research Use Only. Not for diagnostic, therapeutics, prophylactic or in vivo use.