

DATASHEET

ACF Rabbit Polyclonal Antibody

CAT. NO. APA14987

KEY FEATURES

Target	ACF	Source / Host	Rabbit
Reactivity	Human, Mouse, Rat	Clonality	Polyclonal
Applications	WB, IHC	Conjugation	Unconjugated
Form / Buffer	Liquid in 0.42% Potassium phosphate, 0.87% Sodium chloride, pH 7.3, 30% glycerol, and 0.01% sodium azide.		Storage at -20°C

BACKGROUND

Essential component of the apolipoprotein B mRNA editing enzyme complex which is responsible for the postranscriptional editing of a CAA codon for Gln to a UAA codon for stop in APOB mRNA. Binds to APOB mRNA and is probably responsible for docking the catalytic subunit, APOBEC1, to the mRNA to allow it to deaminate its target cytosine. The complex also protects the edited APOB mRNA from nonsense-mediated decay.

APPLICATION

To ensure optimal assay performance, AREX recommends conducting reagent titration tailored to each testing system for optimal detection results.

WB	1:500 - 1:2000
IHC	1:50 - 1:200

*Results are sample-specific. Please refer to your local assay conditions and test parameters for reference.

PRODUCT OVERVIEW

Description	Rabbit polyclonal antibody to ACF
Specificity	Recognizes endogenous levels of ACF protein
Antibody Type	Primary antibody
Immunogen	Recombinant fusion protein of human ACF. The exact sequence is proprietary.
Purification	The antibody was purified by immunogen affinity chromatography.
Molecular Weight	Predicted: 55; Observed: 65 kD
Form/Buffer	Liquid in 0.42% Potassium phosphate, 0.87% Sodium chloride, pH 7.3, 30% glycerol, and 0.01% sodium azide.
Alternative Names	ACF; ASP; APOBEC1 complementation factor; APOBEC1-stimulating protein
Gene Symbol	A1CF
Entrez Gene	29974(Human); 69865(Mouse); 170912(Rat)
SwissProt	Q9NQ94(Human); Q5YD48(Mouse); Q923K9(Rat)

*AREX continuously optimizes our products. Webpage content may not reflect the latest updates. For inquiries, please contact info@arexbio.com or your local distributor.

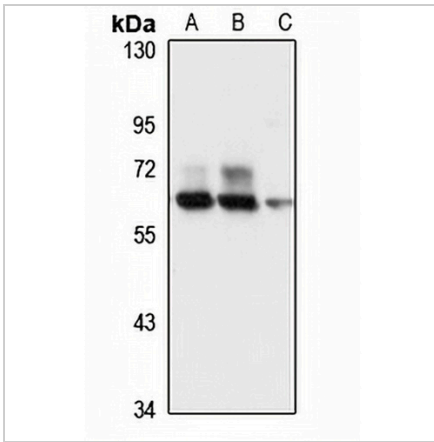
*Clone Number, Reactivity, Source/Host and Clonality can be found in the product name and Key Features section above.

DATASHEET

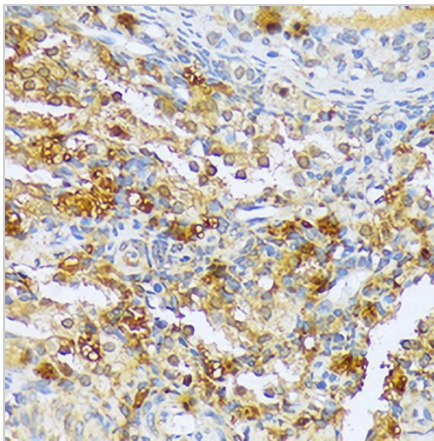
ACF Rabbit Polyclonal Antibody

CAT. NO. APA14987

DATA



Western blot analysis of ACF expression in HT29 (A), HeLa (B), mouse liver (C) whole cell lysates. (Predicted band size: 55; 58; 62; 64; 65 kD; Observed band size: 65 kD)



Immunohistochemical analysis of ACF staining in rat ovary formalin fixed paraffin embedded tissue section. The section was pre-treated using heat mediated antigen retrieval with sodium citrate buffer (pH 6.0). The section was then incubated with the antibody at room temperature and detected using an HRP conjugated compact polymer system. DAB was used as the chromogen. The section was then counterstained with haematoxylin and mounted with DPX.

STORAGE

Store at 4°C short term. For long term storage, store at -20°C, avoiding freeze/thaw cycles.

NOTE

For Research Use Only. Not for diagnostic, therapeutics, prophylactic or in vivo use.