

DATASHEET

LYS5 Rabbit Polyclonal Antibody

CAT. NO. APA14990

KEY FEATURES

Target	LYS5	Source / Host	Rabbit
Reactivity	Human, Mouse, Rat	Clonality	Polyclonal
Applications	WB	Conjugation	Unconjugated
Form / Buffer	Liquid in 0.42% Potassium phosphate, 0.87% Sodium chloride, pH 7.3, 30% glycerol, and 0.01% sodium azide.		Storage at -20°C

BACKGROUND

Catalyzes the post-translational modification of target proteins by phosphopantetheine. Can transfer the 4'-phosphopantetheine moiety from coenzyme A, regardless of whether the CoA is presented in the free thiol form or as an acetyl thioester, to a serine residue of a broad range of acceptors including the acyl carrier domain of FASN.

APPLICATION

To ensure optimal assay performance, AREX recommends conducting reagent titration tailored to each testing system for optimal detection results.

WB	1:500 - 1:2000
----	----------------

*Results are sample-specific. Please refer to your local assay conditions and test parameters for reference.

PRODUCT OVERVIEW

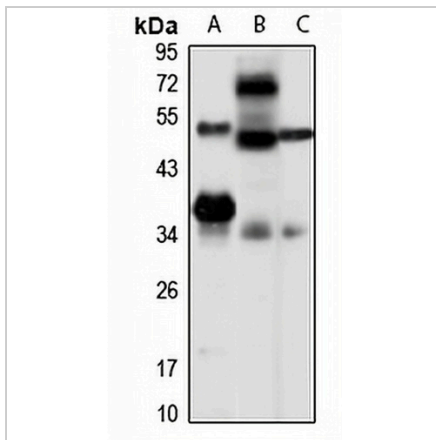
Description	Rabbit polyclonal antibody to LYS5
Specificity	Recognizes endogenous levels of LYS5 protein
Antibody Type	Primary antibody
Immunogen	Recombinant fusion protein of human LYS5. The exact sequence is proprietary.
Purification	The antibody was purified by immunogen affinity chromatography.
Molecular Weight	Predicted: 15; Observed: 36 kD
Form/Buffer	Liquid in 0.42% Potassium phosphate, 0.87% Sodium chloride, pH 7.3, 30% glycerol, and 0.01% sodium azide.
Alternative Names	L-aminoadipate-semialdehyde dehydrogenase-phosphopantetheinyl transferase; 4'-phosphopantetheinyl transferase; Alpha-aminoadipic semialdehyde dehydrogenase-phosphopantetheinyl transferase; AASD-PPT; LYS5 ortholog
Gene Symbol	AASDHPPT
Entrez Gene	60496(Human); 67618(Mouse); 300328(Rat)
SwissProt	Q9NRN7(Human); Q9CQF6(Mouse); B2RYJ4(Rat)

*AREX continuously optimizes our products. Webpage content may not reflect the latest updates. For inquiries, please contact info@arexbio.com or your local distributor.

*Clone Number, Reactivity, Source/Host and Clonality can be found in the product name and Key Features section above.

DATASHEET**LYS5 Rabbit Polyclonal Antibody**

CAT. NO. APA14990

DATA

Western blot analysis of LYS5 expression in HepG2 (A), mouse intestine (B), rat spleen (C) whole cell lysates. (Predicted band size: 15; 35 kD; Observed band size: 36 kD)

STORAGE

Store at 4°C short term. For long term storage, store at -20°C, avoiding freeze/thaw cycles.

NOTE

For Research Use Only. Not for diagnostic, therapeutics, prophylactic or in vivo use.