

DATASHEET

ABCA3 Rabbit Polyclonal Antibody

CAT. NO. APA14991

KEY FEATURES

Target	ABCA3	Source / Host	Rabbit
Reactivity	Human, Rat	Clonality	Polyclonal
Applications	WB	Conjugation	Unconjugated
Form / Buffer	Liquid in 0.42% Potassium phosphate, 0.87% Sodium chloride, pH 7.3, 30% glycerol, and 0.01% sodium azide.		Storage at-20°C

BACKGROUND

Catalyzes the ATP-dependent transport of phospholipids such as phosphatidylcholine and phosphoglycerol from the cytoplasm into the lumen side of lamellar bodies, in turn participates in the lamellar bodies biogenesis and homeostasis of pulmonary surfactant . Transports preferentially phosphatidylcholine containing short acyl chains . In addition plays a role as an efflux transporter of miltefosine across macrophage membranes and free cholesterol (FC) through intraluminal vesicles by removing FC from the cell as a component of surfactant and protects cells from free cholesterol toxicity .

APPLICATION

To ensure optimal assay performance, AREX recommends conducting reagent titration tailored to each testing system for optimal detection results.

WB	1:500 - 1:1000
----	----------------

*Results are sample-specific. Please refer to your local assay conditions and test parameters for reference.

PRODUCT OVERVIEW

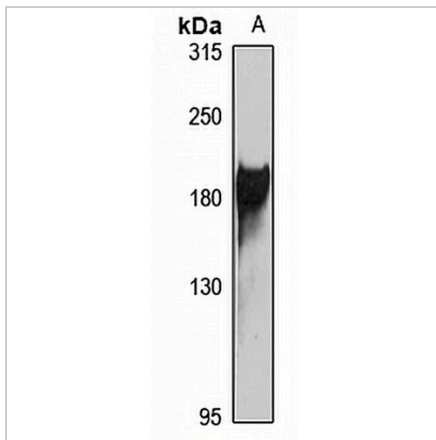
Description	Rabbit polyclonal antibody to ABCA3
Specificity	Recognizes endogenous levels of ABCA3 protein
Antibody Type	Primary antibody
Immunogen	Recombinant fusion protein of human ABCA3. The exact sequence is proprietary.
Purification	The antibody was purified by immunogen affinity chromatography.
Molecular Weight	Predicted: 24; Observed: 191 kD
Form/Buffer	Liquid in 0.42% Potassium phosphate, 0.87% Sodium chloride, pH 7.3, 30% glycerol, and 0.01% sodium azide.
Alternative Names	ABC3; ATP-binding cassette sub-family A member 3; ABC-C transporter; ATP-binding cassette transporter 3; ATP-binding cassette 3
Gene Symbol	ABCA3
Entrez Gene	21(Human)
SwissProt	Q99758(Human)

*AREX continuously optimizes our products. Webpage content may not reflect the latest updates. For inquiries, please contact info@arexbio.com or your local distributor.

*Clone Number, Reactivity, Source/Host and Clonality can be found in the product name and Key Features section above.

DATASHEET**ABCA3 Rabbit Polyclonal Antibody**

CAT. NO. APA14991

DATA

Western blot analysis of ABCA3 expression in rat kidney (A) whole cell lysates. (Predicted band size: 24; 191 kD; Observed band size: 191 kD)

STORAGE

Store at 4°C short term. For long term storage, store at -20°C, avoiding freeze/thaw cycles.

NOTE

For Research Use Only. Not for diagnostic, therapeutics, prophylactic or in vivo use.