

DATASHEET

ABCE1 Rabbit Polyclonal Antibody

CAT. NO. APA14993

KEY FEATURES

Target	ABCE1	Source / Host	Rabbit
Reactivity	Human, Mouse, Rat	Clonality	Polyclonal
Applications	WB	Conjugation	Unconjugated
Form / Buffer	Liquid in 0.42% Potassium phosphate, 0.87% Sodium chloride, pH 7.3, 30% glycerol, and 0.01% sodium azide.		Storage at-20°C

BACKGROUND

Nucleoside-triphosphatase (NTPase) involved in ribosome recycling by mediating ribosome disassembly involved in ribosome recycling by mediating ribosome disassembly . Able to hydrolyze ATP, GTP, UTP and CTP . Splits ribosomes into free 60S subunits and tRNA- and mRNA-bound 40S subunits . Acts either after canonical termination facilitated by release factors (ETF1/eRF1) or after recognition of stalled and vacant ribosomes by mRNA surveillance factors (PELO/Pelota) . Involved in the No-Go Decay (NGD) pathway: recruited to stalled ribosomes by the Pelota-HBS1L complex, and drives the disassembly of stalled ribosomes, followed by degradation of damaged mRNAs as part of the NGD pathway . Also plays a role in quality control of translation of mitochondrial outer membrane-localized mRNA .

APPLICATION

To ensure optimal assay performance, AREX recommends conducting reagent titration tailored to each testing system for optimal detection results.

WB	1:500 - 1:1000
----	----------------

*Results are sample-specific. Please refer to your local assay conditions and test parameters for reference.

PRODUCT OVERVIEW

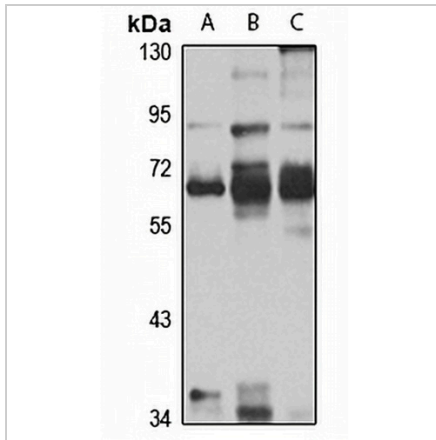
Description	Rabbit polyclonal antibody to ABCE1
Specificity	Recognizes endogenous levels of ABCE1 protein
Antibody Type	Primary antibody
Immunogen	Recombinant fusion protein of human ABCE1. The exact sequence is proprietary.
Purification	The antibody was purified by immunogen affinity chromatography.
Molecular Weight	Predicted: 67 kD; Observed: 67 kD
Form/Buffer	Liquid in 0.42% Potassium phosphate, 0.87% Sodium chloride, pH 7.3, 30% glycerol, and 0.01% sodium azide.
Alternative Names	RLI; RNASEL1; RNASELI; RNS4I; ATP-binding cassette sub-family E member 1; 2'-5'-oligoadenylate-binding protein; HuHP68; RNase L inhibitor; Ribonuclease 4 inhibitor; RNS4I
Gene Symbol	ABCE1
Entrez Gene	6059(Human); 24015(Mouse)
SwissProt	P61221(Human); P61222(Mouse)

*AREX continuously optimizes our products. Webpage content may not reflect the latest updates. For inquiries, please contact info@arexbio.com or your local distributor.

*Clone Number, Reactivity, Source/Host and Clonality can be found in the product name and Key Features section above.

DATASHEET**ABCE1 Rabbit Polyclonal Antibody**

CAT. NO. APA14993

DATA

Western blot analysis of ABCE1 expression in Jurkat (A), HeLa (B), mouse liver (C) whole cell lysates. (Predicted band size: 67 kD; Observed band size: 67 kD)

STORAGE

Store at 4°C short term. For long term storage, store at -20°C, avoiding freeze/thaw cycles.

NOTE

For Research Use Only. Not for diagnostic, therapeutics, prophylactic or in vivo use.