

DATASHEET

TARSH Rabbit Polyclonal Antibody

CAT. NO. APA14998

KEY FEATURES

Target	TARSH	Source / Host	Rabbit
Reactivity	Human	Clonality	Polyclonal
Applications	WB	Conjugation	Unconjugated
Form / Buffer	Liquid in 0.42% Potassium phosphate, 0.87% Sodium chloride, pH 7.3, 30% glycerol, and 0.01% sodium azide.		Storage at -20°C

BACKGROUND

Target of Nesh-SH3 (ABI3BP), also known as ABI gene family member 3-binding protein, Nesh-binding protein, NeshBP. Subunit: Probably interacts with ABI3 Subcellular location: Secreted Tissue specificity: Expressed in brain, heart, lung, liver, pancreas kidney and placenta

APPLICATION

To ensure optimal assay performance, AREX recommends conducting reagent titration tailored to each testing system for optimal detection results.

WB	1:500 - 1:2000
----	----------------

*Results are sample-specific. Please refer to your local assay conditions and test parameters for reference.

PRODUCT OVERVIEW

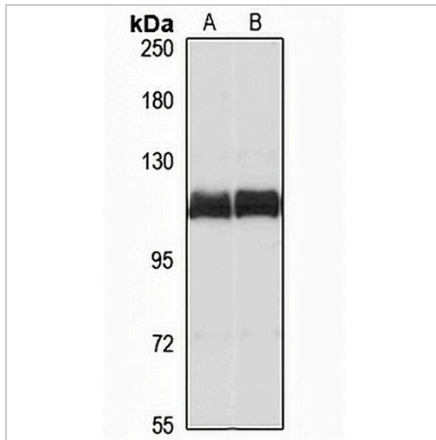
Description	Rabbit polyclonal antibody to TARSH
Specificity	Recognizes endogenous levels of TARSH protein
Antibody Type	Primary antibody
Immunogen	Recombinant fusion protein of human TARSH. The exact sequence is proprietary.
Purification	The antibody was purified by immunogen affinity chromatography.
Molecular Weight	Predicted: 53; Observed: 118 kD
Form/Buffer	Liquid in 0.42% Potassium phosphate, 0.87% Sodium chloride, pH 7.3, 30% glycerol, and 0.01% sodium azide.
Alternative Names	NESHBP; TARSH; Target of Nesh-SH3; Tarsh; ABI gene family member 3-binding protein; Nesh-binding protein; NeshBP
Gene Symbol	ABI3BP
Entrez Gene	25890(Human)
SwissProt	Q7Z7G0(Human)

*AREX continuously optimizes our products. Webpage content may not reflect the latest updates. For inquiries, please contact info@arexbio.com or your local distributor.

*Clone Number, Reactivity, Source/Host and Clonality can be found in the product name and Key Features section above.

DATASHEET**TARSH Rabbit Polyclonal Antibody**

CAT. NO. APA14998

DATA

Western blot analysis of TARSH expression in HEK293T (A), HeLa (B) whole cell lysates.
(Predicted band size: 53; 72; 86; 118 kD; Observed band size: 118 kD)

STORAGE

Store at 4°C short term. For long term storage, store at -20°C, avoiding freeze/thaw cycles.

NOTE

For Research Use Only. Not for diagnostic, therapeutics, prophylactic or in vivo use.