

DATASHEET

ACSL1 Rabbit Polyclonal Antibody

CAT. NO. APA15006

KEY FEATURES

Target	ACSL1	Source / Host	Rabbit
Reactivity	Human, Mouse, Rat	Clonality	Polyclonal
Applications	WB, IF/ICC	Conjugation	Unconjugated
Form / Buffer	Liquid in 0.42% Potassium phosphate, 0.87% Sodium chloride, pH 7.3, 30% glycerol, and 0.01% sodium azide.		Storage at -20°C

BACKGROUND

Catalyzes the conversion of long-chain fatty acids to their active form acyl-CoAs for both synthesis of cellular lipids, and degradation via beta-oxidation . Preferentially uses palmitoleate, oleate and linoleate . Preferentially activates arachidonate than epoxyeicosatrienoic acids (EETs) or hydroxyeicosatrienoic acids (HETEs) .

APPLICATION

To ensure optimal assay performance, AREX recommends conducting reagent titration tailored to each testing system for optimal detection results.

WB	1:500 - 1:2000
IF/ICC	1:50 - 1:200

*Results are sample-specific. Please refer to your local assay conditions and test parameters for reference.

PRODUCT OVERVIEW

Description	Rabbit polyclonal antibody to ACSL1
Specificity	Recognizes endogenous levels of ACSL1 protein
Antibody Type	Primary antibody
Immunogen	Recombinant fusion protein of human ACSL1. The exact sequence is proprietary.
Purification	The antibody was purified by immunogen affinity chromatography.
Molecular Weight	Predicted: 76; Observed: 78 kD
Form/Buffer	Liquid in 0.42% Potassium phosphate, 0.87% Sodium chloride, pH 7.3, 30% glycerol, and 0.01% sodium azide.
Alternative Names	FACL1; FACL2; LACS; LACS1; LACS2; Long-chain-fatty-acid--CoA ligase 1; Acyl-CoA synthetase 1; ACS1; Long-chain acyl-CoA synthetase 1; LACS 1; Long-chain acyl-CoA synthetase 2; LACS 2; Long-chain fatty acid-CoA ligase 2; Palmitoyl-CoA ligase 1; Palmitoyl-CoA ligase 2
Gene Symbol	ACSL1
Entrez Gene	2180(Human); 14081(Mouse); 25288(Rat)
SwissProt	P33121(Human); P41216(Mouse); P18163(Rat)

*AREX continuously optimizes our products. Webpage content may not reflect the latest updates. For inquiries, please contact info@arexbio.com or your local distributor.

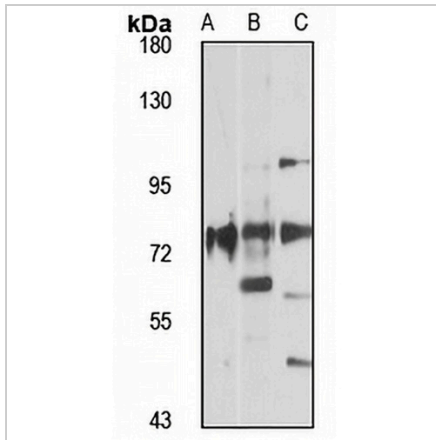
*Clone Number, Reactivity, Source/Host and Clonality can be found in the product name and Key Features section above.

DATASHEET

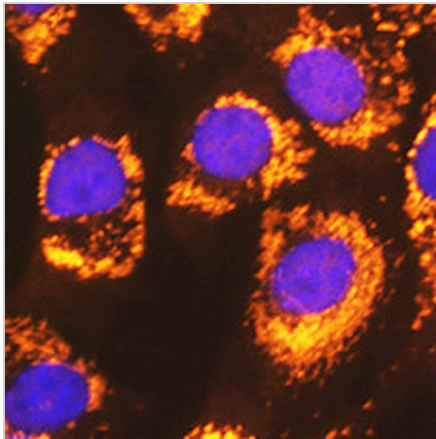
ACSL1 Rabbit Polyclonal Antibody

CAT. NO. APA15006

DATA



Western blot analysis of ACSL1 expression in HepG2 (A), mouse liver (B), rat heart (C) whole cell lysates. (Predicted band size: 76; 77 kD; Observed band size: 78 kD)



Immunofluorescent analysis of ACSL1 staining in NIH3T3 cells. Formalin-fixed cells were permeabilized with 0.1% Triton X-100 in TBS for 5-10 minutes and blocked with 3% BSA-PBS for 30 minutes at room temperature. Cells were probed with the primary antibody in 3% BSA-PBS and incubated overnight at 4 °C in a humidified chamber. Cells were washed with PBST and incubated with a AREX® Fluor 594-conjugated secondary antibody (red) in PBS at room temperature in the dark. DAPI was used to stain the cell nuclei (blue).

STORAGE

Store at 4°C short term. For long term storage, store at -20°C, avoiding freeze/thaw cycles.

NOTE

For Research Use Only. Not for diagnostic, therapeutics, prophylactic or in vivo use.