

## DATASHEET

# ACTL8 Rabbit Polyclonal Antibody

CAT. NO. APA15008

### KEY FEATURES

Target	ACTL8	Source / Host	Rabbit
Reactivity	Human, Mouse	Clonality	Polyclonal
Applications	WB	Conjugation	Unconjugated
Form / Buffer	Liquid in 0.42% Potassium phosphate, 0.87% Sodium chloride, pH 7.3, 30% glycerol, and 0.01% sodium azide.		Storage at -20°C

### BACKGROUND

Actin-like protein 8 (ACTL8), also known as Cancer/testis antigen 57, CT57. Belongs to the actin family Subcellular location: Cytoplasm, cytoskeleton Tissue specificity: Strongly expressed in testis and pancreas. Weak expression in placenta

### APPLICATION

To ensure optimal assay performance, AREX recommends conducting reagent titration tailored to each testing system for optimal detection results.

WB	1:500 - 1:2000
----	----------------

\*Results are sample-specific. Please refer to your local assay conditions and test parameters for reference.

### PRODUCT OVERVIEW

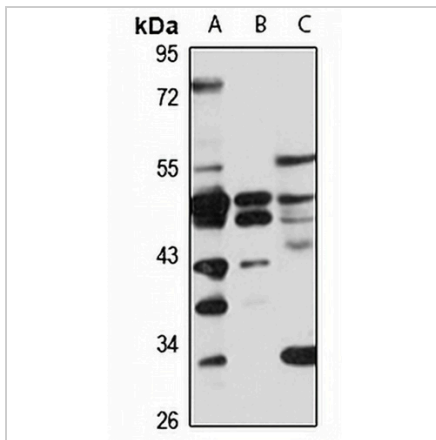
Description	Rabbit polyclonal antibody to ACTL8
Specificity	Recognizes endogenous levels of ACTL8 protein
Antibody Type	Primary antibody
Immunogen	Recombinant fusion protein of human ACTL8. The exact sequence is proprietary.
Purification	The antibody was purified by immunogen affinity chromatography.
Molecular Weight	Predicted: 41 kD; Observed: 41-50 kD
Form/Buffer	Liquid in 0.42% Potassium phosphate, 0.87% Sodium chloride, pH 7.3, 30% glycerol, and 0.01% sodium azide.
Alternative Names	Actin-like protein 8; Cancer/testis antigen 57; CT57
Gene Symbol	ACTL8
Entrez Gene	81569(Human)
SwissProt	Q9H568(Human)

\*AREX continuously optimizes our products. Webpage content may not reflect the latest updates. For inquiries, please contact [info@arexbio.com](mailto:info@arexbio.com) or your local distributor.

\*Clone Number, Reactivity, Source/Host and Clonality can be found in the product name and Key Features section above.

**DATASHEET****ACTL8 Rabbit Polyclonal Antibody**

CAT. NO. APA15008

**DATA**

Western blot analysis of ACTL8 expression in HeLa (A), HepG2 (B), mouse brain (C) whole cell lysates. (Predicted band size: 41 kD; Observed band size: 41-50 kD)

**STORAGE**

Store at 4°C short term. For long term storage, store at -20°C, avoiding freeze/thaw cycles.

**NOTE**

For Research Use Only. Not for diagnostic, therapeutics, prophylactic or in vivo use.