

DATASHEET

ARPM1 Rabbit Polyclonal Antibody

CAT. NO. APA15011

KEY FEATURES

Target	ARPM1	Source / Host	Rabbit
Reactivity	Human, Mouse, Rat	Clonality	Polyclonal
Applications	WB	Conjugation	Unconjugated
Form / Buffer	Liquid in 0.42% Potassium phosphate, 0.87% Sodium chloride, pH 7.3, 30% glycerol, and 0.01% sodium azide.		Storage at -20°C

BACKGROUND

Actin-related protein T3 (ACTRT3), also known as Actin-related protein M1. Belongs to the actin family Subunit: Interacts with PFN3 Subcellular location: Cytoplasm, cytoskeleton; Cytoplasm; Nucleus Tissue specificity: Ubiquitously expressed

APPLICATION

To ensure optimal assay performance, AREX recommends conducting reagent titration tailored to each testing system for optimal detection results.

WB	1:500 - 1:2000
----	----------------

*Results are sample-specific. Please refer to your local assay conditions and test parameters for reference.

PRODUCT OVERVIEW

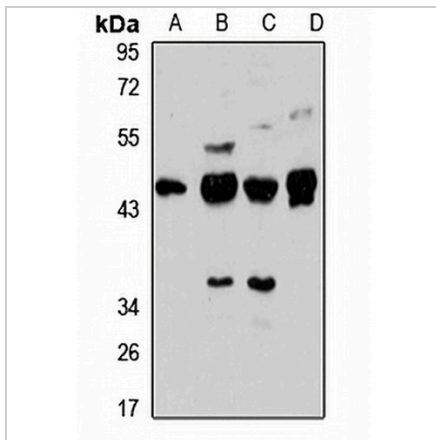
Description	Rabbit polyclonal antibody to ARPM1
Specificity	Recognizes endogenous levels of ARPM1 protein
Antibody Type	Primary antibody
Immunogen	Recombinant fusion protein of human ARPM1. The exact sequence is proprietary.
Purification	The antibody was purified by immunogen affinity chromatography.
Molecular Weight	Predicted: 41 kD; Observed: 41 kD
Form/Buffer	Liquid in 0.42% Potassium phosphate, 0.87% Sodium chloride, pH 7.3, 30% glycerol, and 0.01% sodium azide.
Alternative Names	ARPM1; Actin-related protein T3; ARP-T3; Actin-related protein M1
Gene Symbol	ACTRT3
Entrez Gene	84517(Human); 76652(Mouse)
SwissProt	Q9BYD9(Human); Q8BXF8(Mouse)

*AREX continuously optimizes our products. Webpage content may not reflect the latest updates. For inquiries, please contact info@arexbio.com or your local distributor.

*Clone Number, Reactivity, Source/Host and Clonality can be found in the product name and Key Features section above.

DATASHEET**ARPM1 Rabbit Polyclonal Antibody**

CAT. NO. APA15011

DATA**STORAGE**

Store at 4°C short term. For long term storage, store at -20°C, avoiding freeze/thaw cycles.

NOTE

For Research Use Only. Not for diagnostic, therapeutics, prophylactic or in vivo use.