

DATASHEET

ADAM11 Rabbit Polyclonal Antibody

CAT. NO. APA15016

KEY FEATURES

Target	ADAM11	Source / Host	Rabbit
Reactivity	Human, Mouse	Clonality	Polyclonal
Applications	WB, IF/ICC	Conjugation	Unconjugated
Form / Buffer	Liquid in 0.42% Potassium phosphate, 0.87% Sodium chloride, pH 7.3, 30% glycerol, and 0.01% sodium azide.		Storage at-20°C

BACKGROUND

Probable ligand for integrin in the brain. This is a non catalytic metalloprotease-like protein. Required for localization of the potassium channel subunit proteins KCNA1/KV1.1 and KCNA2/KV1.2 at cerebellar cortex basket cell distal terminals, is thereby involved in ephaptic inhibitory synchronization of Purkinje cell firing and response to stress . Plays a role in spatial learning and motor coordination . Involved in the nociceptive pain response to chemical-derived stimulation .

APPLICATION

To ensure optimal assay performance, AREX recommends conducting reagent titration tailored to each testing system for optimal detection results.

WB	1:500 - 1:2000
IF/ICC	1:50 - 1:200

*Results are sample-specific. Please refer to your local assay conditions and test parameters for reference.

PRODUCT OVERVIEW

Description	Rabbit polyclonal antibody to ADAM11
Specificity	Recognizes endogenous levels of ADAM11 protein
Antibody Type	Primary antibody
Immunogen	Recombinant fusion protein of human ADAM11. The exact sequence is proprietary.
Purification	The antibody was purified by immunogen affinity chromatography.
Molecular Weight	Predicted: 57; Observed: 83 kD
Form/Buffer	Liquid in 0.42% Potassium phosphate, 0.87% Sodium chloride, pH 7.3, 30% glycerol, and 0.01% sodium azide.
Alternative Names	MDC; Disintegrin and metalloproteinase domain-containing protein 11; ADAM 11; Metalloproteinase-like disintegrin-like and cysteine-rich protein; MDC
Gene Symbol	ADAM11
Entrez Gene	4185(Human); 11488(Mouse)
SwissProt	O75078(Human); Q9R1V4(Mouse)

*AREX continuously optimizes our products. Webpage content may not reflect the latest updates. For inquiries, please contact info@arex.bio or your local distributor.

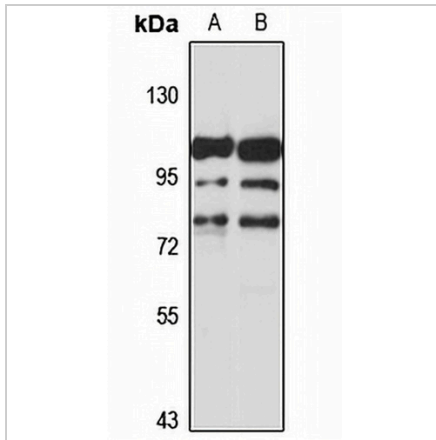
*Clone Number, Reactivity, Source/Host and Clonality can be found in the product name and Key Features section above.

DATASHEET

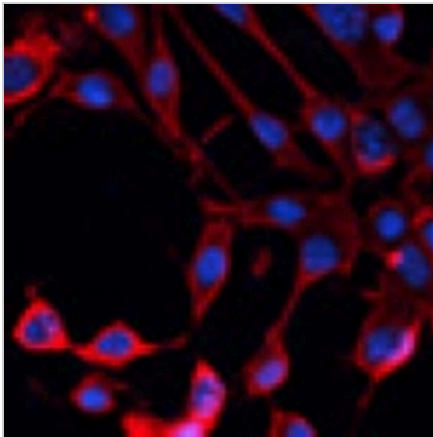
ADAM11 Rabbit Polyclonal Antibody

CAT. NO. APA15016

DATA



Western blot analysis of ADAM11 expression in U87MG (A), mouse brain (B) whole cell lysates. (Predicted band size: 57; 83 kD; Observed band size: 83 kD)



Immunofluorescent analysis of ADAM11 staining in C6 cells. Formalin-fixed cells were permeabilized with 0.1% Triton X-100 in TBS for 5-10 minutes and blocked with 3% BSA-PBS for 30 minutes at room temperature. Cells were probed with the primary antibody in 3% BSA-PBS and incubated overnight at 4 °C in a humidified chamber. Cells were washed with PBST and incubated with a Alexa Fluor 594-conjugated secondary antibody (red) in PBS at room temperature in the dark.

STORAGE

Store at 4°C short term. For long term storage, store at -20°C, avoiding freeze/thaw cycles.

NOTE

For Research Use Only. Not for diagnostic, therapeutics, prophylactic or in vivo use.