

DATASHEET

ADAM2 Rabbit Polyclonal Antibody

CAT. NO. APA15017

KEY FEATURES

Target	ADAM2	Source / Host	Rabbit
Reactivity	Human, Mouse, Rat	Clonality	Polyclonal
Applications	WB	Conjugation	Unconjugated
Form / Buffer	Liquid in 0.42% Potassium phosphate, 0.87% Sodium chloride, pH 7.3, 30% glycerol, and 0.01% sodium azide.		Storage at-20°C

BACKGROUND

Sperm surface membrane protein that may be involved in sperm-egg plasma membrane adhesion and fusion during fertilization. Could have a direct role in sperm-zona binding or migration of sperm from the uterus into the oviduct. Interactions with egg membrane could be mediated via binding between its disintegrin-like domain to one or more integrins receptors on the egg. This is a non catalytic metalloprotease-like protein.

APPLICATION

To ensure optimal assay performance, AREX recommends conducting reagent titration tailored to each testing system for optimal detection results.

WB	1:500 - 1:2000
----	----------------

*Results are sample-specific. Please refer to your local assay conditions and test parameters for reference.

PRODUCT OVERVIEW

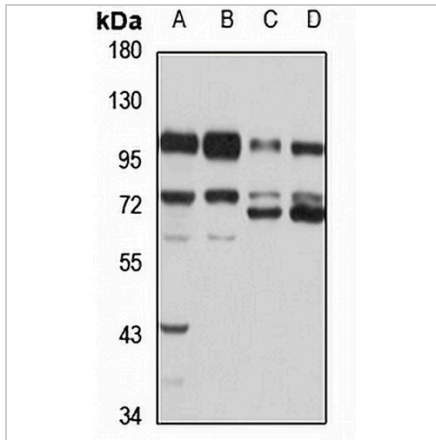
Description	Rabbit polyclonal antibody to ADAM2
Specificity	Recognizes endogenous levels of ADAM2 protein
Antibody Type	Primary antibody
Immunogen	Recombinant fusion protein of human ADAM2. The exact sequence is proprietary.
Purification	The antibody was purified by immunogen affinity chromatography.
Molecular Weight	Predicted: 80; Observed: 82 kD
Form/Buffer	Liquid in 0.42% Potassium phosphate, 0.87% Sodium chloride, pH 7.3, 30% glycerol, and 0.01% sodium azide.
Alternative Names	FTNB; Disintegrin and metalloproteinase domain-containing protein 2; ADAM 2; Cancer/testis antigen 15; CT15; Fertilin subunit beta; PH-30; PH30; PH30-beta
Gene Symbol	ADAM2
Entrez Gene	2515(Human); 11495(Mouse); 56806(Rat)
SwissProt	Q99965(Human); Q60718(Mouse); Q63202(Rat)

*AREX continuously optimizes our products. Webpage content may not reflect the latest updates. For inquiries, please contact info@arexbio.com or your local distributor.

*Clone Number, Reactivity, Source/Host and Clonality can be found in the product name and Key Features section above.

DATASHEET**ADAM2 Rabbit Polyclonal Antibody**

CAT. NO. APA15017

DATA

Western blot analysis of ADAM2 expression in MCF7 (A), Raji (B), mouse testis (C), rat testis (D) whole cell lysates. (Predicted band size: 80; 82 kD; Observed band size: 82 kD)

STORAGE

Store at 4°C short term. For long term storage, store at -20°C, avoiding freeze/thaw cycles.

NOTE

For Research Use Only. Not for diagnostic, therapeutics, prophylactic or in vivo use.