

DATASHEET

ADAMTSL1 Rabbit Polyclonal Antibody

CAT. NO. APA15019

KEY FEATURES

Target	ADAMTSL1	Source / Host	Rabbit
Reactivity	Human, Mouse	Clonality	Polyclonal
Applications	WB	Conjugation	Unconjugated
Form / Buffer	Liquid in 0.42% Potassium phosphate, 0.87% Sodium chloride, pH 7.3, 30% glycerol, and 0.01% sodium azide.		Storage at -20°C

BACKGROUND

This gene encodes a secreted protein and member of the ADAMTS (a disintegrin and metalloproteinase with thrombospondin motif) family. This protein lacks the metalloproteinase and disintegrin-like domains, which are typical of the ADAMTS family, but contains other ADAMTS domains, including the thrombospondin type 1 motif. This protein may have important functions in the extracellular matrix. Alternative splicing results in multiple transcript variants encoding distinct proteins.

APPLICATION

To ensure optimal assay performance, AREX recommends conducting reagent titration tailored to each testing system for optimal detection results.

WB	1:500 - 1:2000
----	----------------

*Results are sample-specific. Please refer to your local assay conditions and test parameters for reference.

PRODUCT OVERVIEW

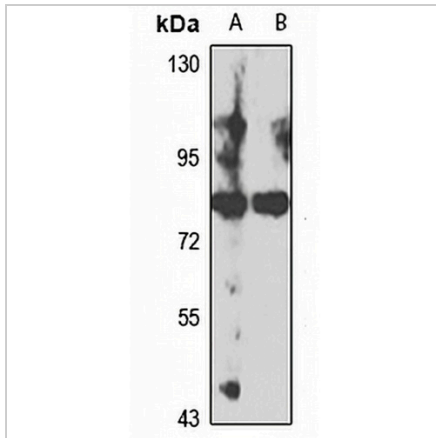
Description	Rabbit polyclonal antibody to ADAMTSL1
Specificity	Recognizes endogenous levels of ADAMTSL1 protein
Antibody Type	Primary antibody
Immunogen	Recombinant fusion protein of human ADAMTSL1. The exact sequence is proprietary.
Purification	The antibody was purified by immunogen affinity chromatography.
Molecular Weight	Predicted: 27; Observed: 80 kD
Form/Buffer	Liquid in 0.42% Potassium phosphate, 0.87% Sodium chloride, pH 7.3, 30% glycerol, and 0.01% sodium azide.
Alternative Names	ADAMTSR1; C9orf94; ADAMTS-like protein 1; ADAMTSL-1; Punctin-1
Gene Symbol	ADAMTSL1
Entrez Gene	92949(Human); 77739(Mouse)
SwissProt	Q8N6G6(Human); Q8BLI0(Mouse)

*AREX continuously optimizes our products. Webpage content may not reflect the latest updates. For inquiries, please contact info@arexbio.com or your local distributor.

*Clone Number, Reactivity, Source/Host and Clonality can be found in the product name and Key Features section above.

DATASHEET**ADAMTSL1 Rabbit Polyclonal Antibody**

CAT. NO. APA15019

DATA

Western blot analysis of ADAMTSL1 expression in HepG2 (A), mouse lung (B) whole cell lysates. (Predicted band size: 27; 48; 50; 58; 75; 193 kD; Observed band size: 80 kD)

STORAGE

Store at 4°C short term. For long term storage, store at -20°C, avoiding freeze/thaw cycles.

NOTE

For Research Use Only. Not for diagnostic, therapeutics, prophylactic or in vivo use.