

**DATASHEET**

**Centaurin-alpha-1 Rabbit Polyclonal Antibody**

CAT. NO. APA15021

**KEY FEATURES**

Target	Centaurin-alpha-1	Source / Host	Rabbit
Reactivity	Human, Mouse, Rat	Clonality	Polyclonal
Applications	WB, IF/ICC	Conjugation	Unconjugated
Form / Buffer	Liquid in 0.42% Potassium phosphate, 0.87% Sodium chloride, pH 7.3, 30% glycerol, and 0.01% sodium azide.		Storage at-20°C

**BACKGROUND**

GTPase-activating protein for the ADP ribosylation factor family (Probable). Binds phosphatidylinositol 3,4,5-trisphosphate (PtdInsP3) and inositol 1,3,4,5-tetrakisphosphate (InsP4). Regulates the incorporation of CD63 and CD9 into multivesicular bodies . Binds phosphatidylinositol 3,4,5-trisphosphate (PtdInsP3) and inositol 1,3,4,5-tetrakisphosphate (InsP4). Regulates the incorporation of CD63 and CD9 into multivesicular bodies .

**APPLICATION**

To ensure optimal assay performance, AREX recommends conducting reagent titration tailored to each testing system for optimal detection results.

WB	1:500 - 1:2000
IF/ICC	1:50 - 1:200

\*Results are sample-specific. Please refer to your local assay conditions and test parameters for reference.

**PRODUCT OVERVIEW**

Description	Rabbit polyclonal antibody to Centaurin-alpha-1
Specificity	Recognizes endogenous levels of Centaurin-alpha-1 protein
Antibody Type	Primary antibody
Immunogen	Recombinant fusion protein of human Centaurin-alpha-1. The exact sequence is proprietary.
Purification	The antibody was purified by immunogen affinity chromatography.
Molecular Weight	Predicted: 35; Observed: 43 kD
Form/Buffer	Liquid in 0.42% Potassium phosphate, 0.87% Sodium chloride, pH 7.3, 30% glycerol, and 0.01% sodium azide.
Alternative Names	CENTA1; Arf-GAP with dual PH domain-containing protein 1; Centaurin-alpha-1; Cnt-a1; Putative MAPK-activating protein PM25
Gene Symbol	ADAP1
Entrez Gene	11033(Human)
SwissProt	O75689(Human)

\*AREX continuously optimizes our products. Webpage content may not reflect the latest updates. For inquiries, please contact [info@arexbio.com](mailto:info@arexbio.com) or your local distributor.

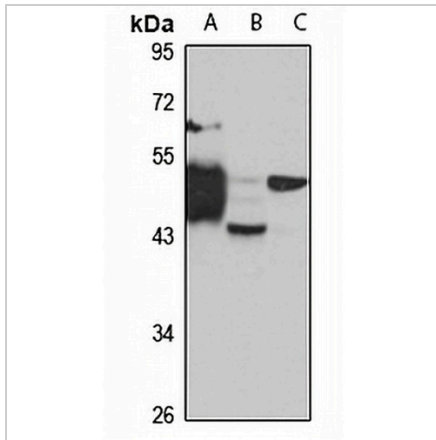
\*Clone Number, Reactivity, Source/Host and Clonality can be found in the product name and Key Features section above.

**DATASHEET**

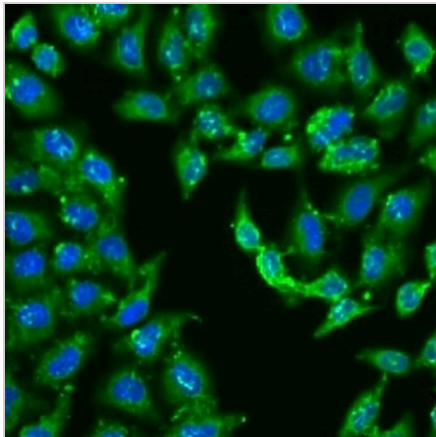
**Centaurin-alpha-1 Rabbit Polyclonal Antibody**

CAT. NO. APA15021

**DATA**



Western blot analysis of Centaurin-alpha-1 expression in Jurkat (A), mouse small intestine (B), rat kidney (C) whole cell lysates. (Predicted band size: 35; 43; 44 kD; Observed band size: 43 kD)



Immunofluorescent analysis of Centaurin-alpha-1 staining in U2OS cells. Formalin-fixed cells were permeabilized with 0.1% Triton X-100 in TBS for 5-10 minutes and blocked with 3% BSA-PBS for 30 minutes at room temperature. Cells were probed with the primary antibody in 3% BSA-PBS and incubated overnight at 4 °C in a humidified chamber. Cells were washed with PBST and incubated with a Alexa Fluor 488-conjugated secondary antibody (green) in PBS at room temperature in the dark.

**STORAGE**

Store at 4°C short term. For long term storage, store at -20°C, avoiding freeze/thaw cycles.

**NOTE**

For Research Use Only. Not for diagnostic, therapeutics, prophylactic or in vivo use.