

DATASHEET

Adenylate Cyclase 2 Rabbit Polyclonal Antibody

CAT. NO. APA15024

KEY FEATURES

Target	Adenylate Cyclase 2	Source / Host	Rabbit
Reactivity	Human, Mouse, Rat	Clonality	Polyclonal
Applications	WB	Conjugation	Unconjugated
Form / Buffer	Liquid in 0.42% Potassium phosphate, 0.87% Sodium chloride, pH 7.3, 30% glycerol, and 0.01% sodium azide.		Storage at -20°C

BACKGROUND

Catalyzes the formation of the signaling molecule cAMP in response to G-protein signaling . Down-stream signaling cascades mediate changes in gene expression patterns and lead to increased IL6 production. Functions in signaling cascades downstream of the muscarinic acetylcholine receptors .

APPLICATION

To ensure optimal assay performance, AREX recommends conducting reagent titration tailored to each testing system for optimal detection results.

WB	1:500 - 1:2000
----	----------------

*Results are sample-specific. Please refer to your local assay conditions and test parameters for reference.

PRODUCT OVERVIEW

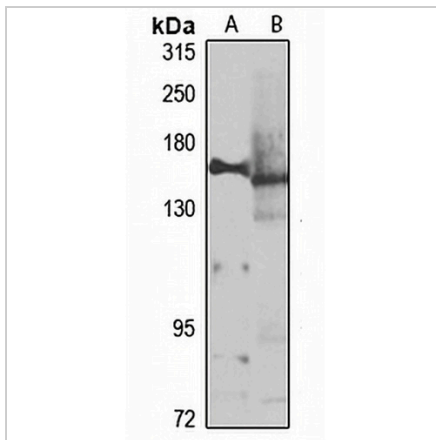
Description	Rabbit polyclonal antibody to Adenylate Cyclase 2
Specificity	Recognizes endogenous levels of Adenylate Cyclase 2 protein
Antibody Type	Primary antibody
Immunogen	Recombinant fusion protein of human Adenylate Cyclase 2. The exact sequence is proprietary.
Purification	The antibody was purified by immunogen affinity chromatography.
Molecular Weight	Predicted: 103; Observed: 150 kD
Form/Buffer	Liquid in 0.42% Potassium phosphate, 0.87% Sodium chloride, pH 7.3, 30% glycerol, and 0.01% sodium azide.
Alternative Names	KIAA1060; Adenylate cyclase type 2; ATP pyrophosphate-lyase 2; Adenylate cyclase type II; Adenylyl cyclase 2
Gene Symbol	ADCY2
Entrez Gene	108(Human); 81636(Rat)
SwissProt	Q08462(Human); Q80TL1(Mouse); P26769(Rat)

*AREX continuously optimizes our products. Webpage content may not reflect the latest updates. For inquiries, please contact info@arexbio.com or your local distributor.

*Clone Number, Reactivity, Source/Host and Clonality can be found in the product name and Key Features section above.

DATASHEET**Adenylate Cyclase 2 Rabbit Polyclonal Antibody**

CAT. NO. APA15024

DATA

Western blot analysis of Adenylate Cyclase 2 expression in SHSY5Y (A), rat eye (B) whole cell lysates. (Predicted band size: 103; 123 kD; Observed band size: 150 kD)

STORAGE

Store at 4°C short term. For long term storage, store at -20°C, avoiding freeze/thaw cycles.

NOTE

For Research Use Only. Not for diagnostic, therapeutics, prophylactic or in vivo use.