

DATASHEET

Adenylate Cyclase 3 Rabbit Polyclonal Antibody

CAT. NO. APA15025

KEY FEATURES

Target	Adenylate Cyclase 3	Source / Host	Rabbit
Reactivity	Human, Mouse, Rat	Clonality	Polyclonal
Applications	WB	Conjugation	Unconjugated
Form / Buffer	Liquid in 0.42% Potassium phosphate, 0.87% Sodium chloride, pH 7.3, 30% glycerol, and 0.01% sodium azide.		Storage at -20°C

BACKGROUND

Catalyzes the formation of the signaling molecule cAMP in response to G-protein signaling. Participates in signaling cascades triggered by odorant receptors via its function in cAMP biosynthesis: specifically activated by G alpha protein GNAL/G(olf) in olfactory epithelium. Required for normal sperm motility and normal male fertility. Plays a role in regulating insulin levels and body fat accumulation in response to a high fat diet.

APPLICATION

To ensure optimal assay performance, AREX recommends conducting reagent titration tailored to each testing system for optimal detection results.

WB	1:500 - 1:2000
----	----------------

*Results are sample-specific. Please refer to your local assay conditions and test parameters for reference.

PRODUCT OVERVIEW

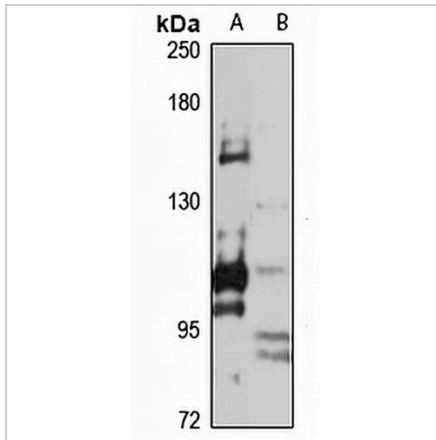
Description	Rabbit polyclonal antibody to Adenylate Cyclase 3
Specificity	Recognizes endogenous levels of Adenylate Cyclase 3 protein
Antibody Type	Primary antibody
Immunogen	Recombinant fusion protein of human Adenylate Cyclase 3. The exact sequence is proprietary.
Purification	The antibody was purified by immunogen affinity chromatography.
Molecular Weight	Predicted: 82; Observed: 150-170 kD
Form/Buffer	Liquid in 0.42% Potassium phosphate, 0.87% Sodium chloride, pH 7.3, 30% glycerol, and 0.01% sodium azide.
Alternative Names	KIAA0511; Adenylate cyclase type 3; ATP pyrophosphate-lyase 3; Adenylate cyclase type III; AC-III; Adenylate cyclase olfactory type; Adenylyl cyclase 3; AC3
Gene Symbol	ADCY3
Entrez Gene	109(Human); 104111(Mouse); 64508(Rat)
SwissProt	O60266(Human); Q8VHH7(Mouse); P21932(Rat)

*AREX continuously optimizes our products. Webpage content may not reflect the latest updates. For inquiries, please contact info@arexbio.com or your local distributor.

*Clone Number, Reactivity, Source/Host and Clonality can be found in the product name and Key Features section above.

DATASHEET**Adenylate Cyclase 3 Rabbit Polyclonal Antibody**

CAT. NO. APA15025

DATA

Western blot analysis of Adenylate Cyclase 3 expression in HepG2 (A), mouse brain (B) whole cell lysates. (Predicted band size: 82; 128 kD; Observed band size: 150-170 kD)

STORAGE

Store at 4°C short term. For long term storage, store at -20°C, avoiding freeze/thaw cycles.

NOTE

For Research Use Only. Not for diagnostic, therapeutics, prophylactic or in vivo use.