

DATASHEET

AEBP1 Rabbit Polyclonal Antibody

CAT. NO. APA15029

KEY FEATURES

Target	AEBP1	Source / Host	Rabbit
Reactivity	Human, Mouse, Rat	Clonality	Polyclonal
Applications	WB, IF/ICC	Conjugation	Unconjugated
Form / Buffer	Liquid in 0.42% Potassium phosphate, 0.87% Sodium chloride, pH 7.3, 30% glycerol, and 0.01% sodium azide.		Storage at -20°C

BACKGROUND

As a positive regulator of collagen fibrillogenesis, it is probably involved in the organization and remodeling of the extracellular matrix.

APPLICATION

To ensure optimal assay performance, AREX recommends conducting reagent titration tailored to each testing system for optimal detection results.

WB	1:500 - 1:1000
IF/ICC	1:50 - 1:200

*Results are sample-specific. Please refer to your local assay conditions and test parameters for reference.

PRODUCT OVERVIEW

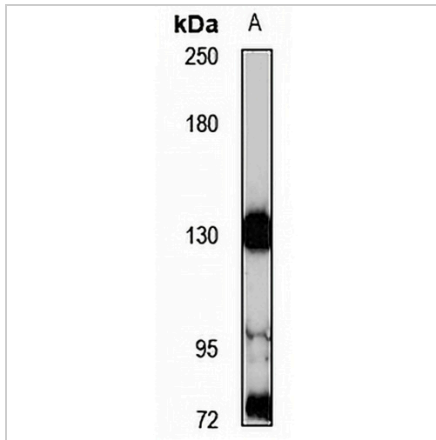
Description	Rabbit polyclonal antibody to AEBP1
Specificity	Recognizes endogenous levels of AEBP1 protein
Antibody Type	Primary antibody
Immunogen	Recombinant fusion protein of human AEBP1. The exact sequence is proprietary.
Purification	The antibody was purified by immunogen affinity chromatography.
Molecular Weight	Predicted: 82; Observed: 131 kD
Form/Buffer	Liquid in 0.42% Potassium phosphate, 0.87% Sodium chloride, pH 7.3, 30% glycerol, and 0.01% sodium azide.
Alternative Names	ACL P; Adipocyte enhancer-binding protein 1; AE-binding protein 1; Aortic carboxypeptidase-like protein
Gene Symbol	AEBP1
Entrez Gene	165(Human); 11568(Mouse); 305494(Rat)
SwissProt	Q8IUX7(Human); Q640N1(Mouse); A2RUV9(Rat)

*AREX continuously optimizes our products. Webpage content may not reflect the latest updates. For inquiries, please contact info@arexbio.com or your local distributor.

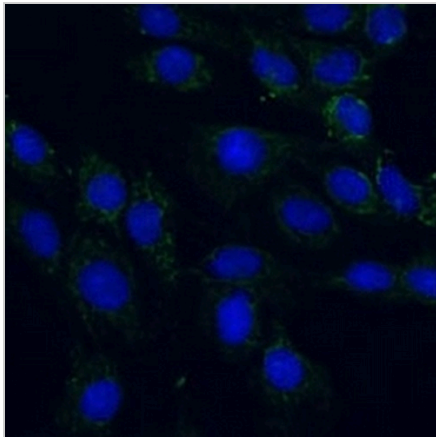
*Clone Number, Reactivity, Source/Host and Clonality can be found in the product name and Key Features section above.

DATASHEET**AEBP1 Rabbit Polyclonal Antibody**

CAT. NO. APA15029

DATA

Western blot analysis of AEBP1 expression in mouse brain (A) whole cell lysates.
(Predicted band size: 82; 130 kD; Observed band size: 131 kD)



Immunofluorescent analysis of AEBP1 staining in L929 cells. Formalin-fixed cells were permeabilized with 0.1% Triton X-100 in TBS for 5-10 minutes and blocked with 3% BSA-PBS for 30 minutes at room temperature. Cells were probed with the primary antibody in 3% BSA-PBS and incubated overnight at 4 °C in a humidified chamber. Cells were washed with PBST and incubated with a Alexa Fluor 488-conjugated secondary antibody (green) in PBS at room temperature in the dark.

STORAGE

Store at 4°C short term. For long term storage, store at -20°C, avoiding freeze/thaw cycles.

NOTE

For Research Use Only. Not for diagnostic, therapeutics, prophylactic or in vivo use.