

## DATASHEET

# XB130 Rabbit Polyclonal Antibody

CAT. NO. APA15030

### KEY FEATURES

Target	XB130	Source / Host	Rabbit
Reactivity	Human, Mouse	Clonality	Polyclonal
Applications	WB	Conjugation	Unconjugated
Form / Buffer	Liquid in 0.42% Potassium phosphate, 0.87% Sodium chloride, pH 7.3, 30% glycerol, and 0.01% sodium azide.		Storage at -20°C

### BACKGROUND

May play a role in a signaling cascade by enhancing the kinase activity of SRC. Contributes to SRC-regulated transcription activation.

### APPLICATION

To ensure optimal assay performance, AREX recommends conducting reagent titration tailored to each testing system for optimal detection results.

WB	1:500 - 1:2000
----	----------------

\*Results are sample-specific. Please refer to your local assay conditions and test parameters for reference.

### PRODUCT OVERVIEW

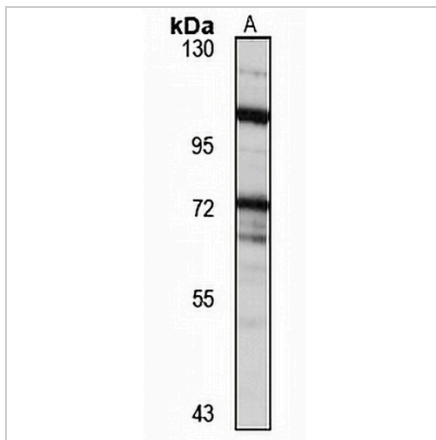
Description	Rabbit polyclonal antibody to XB130
Specificity	Recognizes endogenous levels of XB130 protein
Antibody Type	Primary antibody
Immunogen	Recombinant fusion protein of human XB130. The exact sequence is proprietary.
Purification	The antibody was purified by immunogen affinity chromatography.
Molecular Weight	Predicted: 38; Observed: 110 kD
Form/Buffer	Liquid in 0.42% Potassium phosphate, 0.87% Sodium chloride, pH 7.3, 30% glycerol, and 0.01% sodium azide.
Alternative Names	KIAA1914; XB130; Actin filament-associated protein 1-like 2; AFAP1-like protein 2
Gene Symbol	AFAP1L2
Entrez Gene	84632(Human); 226250(Mouse)
SwissProt	Q8N4X5(Human); Q5DTU0(Mouse)

\*AREX continuously optimizes our products. Webpage content may not reflect the latest updates. For inquiries, please contact [info@arexbio.com](mailto:info@arexbio.com) or your local distributor.

\*Clone Number, Reactivity, Source/Host and Clonality can be found in the product name and Key Features section above.

**DATASHEET****XB130 Rabbit Polyclonal Antibody**

CAT. NO. APA15030

**DATA**

Western blot analysis of XB130 expression in LO2 (A) whole cell lysates. (Predicted band size: 38; 90; 91; 93 kD; Observed band size: 110 kD)

**STORAGE**

Store at 4°C short term. For long term storage, store at -20°C, avoiding freeze/thaw cycles.

**NOTE**

For Research Use Only. Not for diagnostic, therapeutics, prophylactic or in vivo use.