

DATASHEET

Afamin Rabbit Polyclonal Antibody

CAT. NO. APA15032

KEY FEATURES

Target	Afamin	Source / Host	Rabbit
Reactivity	Human	Clonality	Polyclonal
Applications	WB	Conjugation	Unconjugated
Form / Buffer	Liquid in 0.42% Potassium phosphate, 0.87% Sodium chloride, pH 7.3, 30% glycerol, and 0.01% sodium azide.		Storage at-20°C

BACKGROUND

Functions as a carrier for hydrophobic molecules in body fluids (Probable). Essential for the solubility and activity of lipidated Wnt family members, including WNT1, WNT2B, WNT3, WNT3A, WNT5A, WNT7A, WNT7B, WNT8, WNT9A, WNT9B, WNT10A and WNT10B . Essential for the solubility and activity of lipidated Wnt family members, including WNT1, WNT2B, WNT3, WNT3A, WNT5A, WNT7A, WNT7B, WNT8, WNT9A, WNT9B, WNT10A and WNT10B . Binds vitamin E . May transport vitamin E in body fluids under conditions where the lipoprotein system is not sufficient . May be involved in the transport of vitamin E across the blood-brain barrier .

APPLICATION

To ensure optimal assay performance, AREX recommends conducting reagent titration tailored to each testing system for optimal detection results.

WB	1:500 - 1:2000
----	----------------

*Results are sample-specific. Please refer to your local assay conditions and test parameters for reference.

PRODUCT OVERVIEW

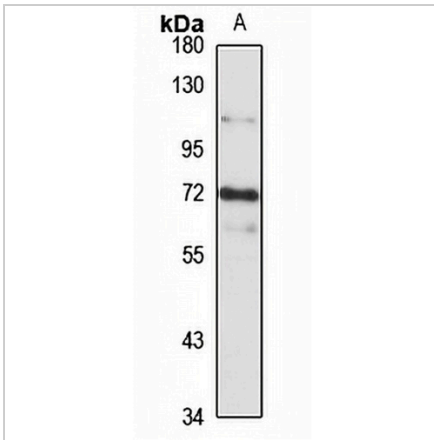
Description	Rabbit polyclonal antibody to Afamin
Specificity	Recognizes endogenous levels of Afamin protein
Antibody Type	Primary antibody
Immunogen	Recombinant fusion protein of human Afamin. The exact sequence is proprietary.
Purification	The antibody was purified by immunogen affinity chromatography.
Molecular Weight	Predicted: 69 kD; Observed: 69 kD
Form/Buffer	Liquid in 0.42% Potassium phosphate, 0.87% Sodium chloride, pH 7.3, 30% glycerol, and 0.01% sodium azide.
Alternative Names	ALB2; ALBA; Afamin; Alpha-albumin; Alpha-Alb
Gene Symbol	AFM
Entrez Gene	173(Human)
SwissProt	P43652(Human)

*AREX continuously optimizes our products. Webpage content may not reflect the latest updates. For inquiries, please contact info@arexbio.com or your local distributor.

*Clone Number, Reactivity, Source/Host and Clonality can be found in the product name and Key Features section above.

DATASHEET**Afamin Rabbit Polyclonal Antibody**

CAT. NO. APA15032

DATA

Western blot analysis of Afamin expression in HepG2 (A) whole cell lysates. (Predicted band size: 69 kD; Observed band size: 69 kD)

STORAGE

Store at 4°C short term. For long term storage, store at -20°C, avoiding freeze/thaw cycles.

NOTE

For Research Use Only. Not for diagnostic, therapeutics, prophylactic or in vivo use.