

**DATASHEET**

**AGTPBP1 Rabbit Polyclonal Antibody**

CAT. NO. APA15037

**KEY FEATURES**

Target	AGTPBP1	Source / Host	Rabbit
Reactivity	Human, Mouse, Rat	Clonality	Polyclonal
Applications	WB	Conjugation	Unconjugated
Form / Buffer	Liquid in 0.42% Potassium phosphate, 0.87% Sodium chloride, pH 7.3, 30% glycerol, and 0.01% sodium azide.		Storage at -20°C

**BACKGROUND**

Metalloprotease that mediates protein deglutamylation of tubulin and non-tubulin target proteins . Catalyzes the removal of polyglutamate side chains present on the gamma-carboxyl group of glutamate residues within the C-terminal tail of alpha- and beta-tubulin . Specifically cleaves tubulin long-side-chains, while it is not able to remove the branching point glutamate . Also catalyzes the removal of polyglutamate residues from the carboxy-terminus of alpha-tubulin as well as non-tubulin proteins such as MYLK . Involved in KLF4 deglutamylation which promotes KLF4 proteasome-mediated degradation, thereby negatively regulating cell pluripotency maintenance and embryogenesis .

**APPLICATION**

To ensure optimal assay performance, AREX recommends conducting reagent titration tailored to each testing system for optimal detection results.

WB	1:500 - 1:2000
----	----------------

\*Results are sample-specific. Please refer to your local assay conditions and test parameters for reference.

**PRODUCT OVERVIEW**

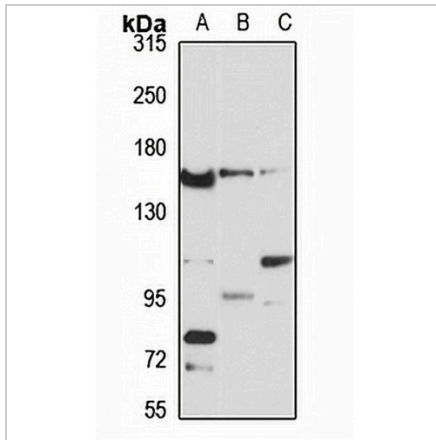
Description	Rabbit polyclonal antibody to AGTPBP1
Specificity	Recognizes endogenous levels of AGTPBP1 protein
Antibody Type	Primary antibody
Immunogen	Recombinant fusion protein of human AGTPBP1. The exact sequence is proprietary.
Purification	The antibody was purified by immunogen affinity chromatography.
Molecular Weight	Predicted: 133; Observed: 138 kD
Form/Buffer	Liquid in 0.42% Potassium phosphate, 0.87% Sodium chloride, pH 7.3, 30% glycerol, and 0.01% sodium azide.
Alternative Names	CCP1; KIAA1035; NNA1; Cytosolic carboxypeptidase 1; ATP/GTP-binding protein 1; Nervous system nuclear protein induced by axotomy protein 1 homolog
Gene Symbol	AGTPBP1
Entrez Gene	23287(Human); 67269(Mouse)
SwissProt	Q9UPW5(Human); Q641K1(Mouse)

\*AREX continuously optimizes our products. Webpage content may not reflect the latest updates. For inquiries, please contact [info@arexbio.com](mailto:info@arexbio.com) or your local distributor.

\*Clone Number, Reactivity, Source/Host and Clonality can be found in the product name and Key Features section above.

**DATASHEET****AGTPBP1 Rabbit Polyclonal Antibody**

CAT. NO. APA15037

**DATA**

Western blot analysis of AGTPBP1 expression in Jurkat (A), mouse pancreas (B), rat testis (C) whole cell lysates. (Predicted band size: 133; 138 kD; Observed band size: 138 kD)

**STORAGE**

Store at 4°C short term. For long term storage, store at -20°C, avoiding freeze/thaw cycles.

**NOTE**

For Research Use Only. Not for diagnostic, therapeutics, prophylactic or in vivo use.