

## DATASHEET

# AT2 Rabbit Polyclonal Antibody

CAT. NO. APA15038

### KEY FEATURES

Target	AT2	Source / Host	Rabbit
Reactivity	Human	Clonality	Polyclonal
Applications	WB	Conjugation	Unconjugated
Form / Buffer	Liquid in 0.42% Potassium phosphate, 0.87% Sodium chloride, pH 7.3, 30% glycerol, and 0.01% sodium azide.		Storage at -20°C

### BACKGROUND

Receptor for angiotensin II, a vasoconstricting peptide . Signals primarily via a non-canonical G-protein- and beta-arrestin independent pathways . Cooperates with MTUS1 to inhibit ERK2 activation and cell proliferation .

### APPLICATION

To ensure optimal assay performance, AREX recommends conducting reagent titration tailored to each testing system for optimal detection results.

WB	1:500 - 1:2000
----	----------------

\*Results are sample-specific. Please refer to your local assay conditions and test parameters for reference.

### PRODUCT OVERVIEW

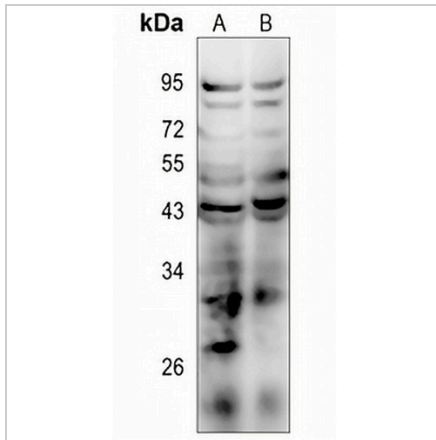
Description	Rabbit polyclonal antibody to AT2
Specificity	Recognizes endogenous levels of AT2 protein
Antibody Type	Primary antibody
Immunogen	KLH-conjugated synthetic peptide of human AT2. The exact sequence is proprietary.
Purification	The antibody was purified by immunogen affinity chromatography.
Molecular Weight	Predicted: 41 kD; Observed: 43 kD
Form/Buffer	Liquid in 0.42% Potassium phosphate, 0.87% Sodium chloride, pH 7.3, 30% glycerol, and 0.01% sodium azide.
Alternative Names	Type-2 angiotensin II receptor; Angiotensin II type-2 receptor; AT2
Gene Symbol	AGTR2
Entrez Gene	186(Human)
SwissProt	P50052(Human)

\*AREX continuously optimizes our products. Webpage content may not reflect the latest updates. For inquiries, please contact [info@arexbio.com](mailto:info@arexbio.com) or your local distributor.

\*Clone Number, Reactivity, Source/Host and Clonality can be found in the product name and Key Features section above.

**DATASHEET****AT2 Rabbit Polyclonal Antibody**

CAT. NO. APA15038

**DATA**

Western blot analysis of AT2 expression in HEK293T (A), HCT116 (B) whole cell lysates. (Predicted band size: 41 kD; Observed band size: 43 kD)

**STORAGE**

Store at 4°C short term. For long term storage, store at -20°C, avoiding freeze/thaw cycles.

**NOTE**

For Research Use Only. Not for diagnostic, therapeutics, prophylactic or in vivo use.