

**DATASHEET**

**CD166 Rabbit Polyclonal Antibody**

CAT. NO. APA15042

**KEY FEATURES**

Target	CD166	Source / Host	Rabbit
Reactivity	Human, Mouse, Rat	Clonality	Polyclonal
Applications	WB	Conjugation	Unconjugated
Form / Buffer	Liquid in 0.42% Potassium phosphate, 0.87% Sodium chloride, pH 7.3, 30% glycerol, and 0.01% sodium azide.		Storage at -20°C

**BACKGROUND**

Cell adhesion molecule that mediates both heterotypic cell-cell contacts via its interaction with CD6, as well as homotypic cell-cell contacts . Promotes T-cell activation and proliferation via its interactions with CD6 . Contributes to the formation and maturation of the immunological synapse via its interactions with CD6 . Mediates homotypic interactions with cells that express ALCAM . Acts as a ligand for the LILRB4 receptor, enhancing LILRB4-mediated inhibition of T cell proliferation . Required for normal hematopoietic stem cell engraftment in the bone marrow . Mediates attachment of dendritic cells onto endothelial cells via homotypic interaction . Inhibits endothelial cell migration and promotes endothelial tube formation via homotypic interactions .

**APPLICATION**

To ensure optimal assay performance, AREX recommends conducting reagent titration tailored to each testing system for optimal detection results.

WB	1:500 - 1:2000
----	----------------

\*Results are sample-specific. Please refer to your local assay conditions and test parameters for reference.

**PRODUCT OVERVIEW**

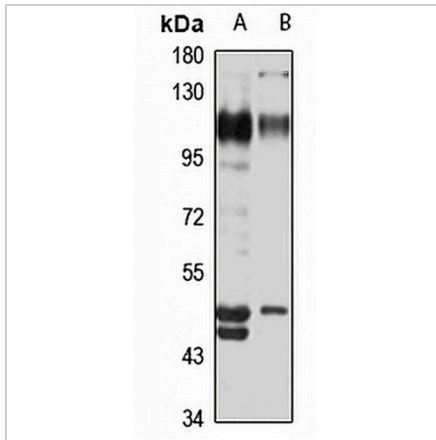
Description	Rabbit polyclonal antibody to CD166
Specificity	Recognizes endogenous levels of CD166 protein
Antibody Type	Primary antibody
Immunogen	Recombinant fusion protein of human CD166. The exact sequence is proprietary.
Purification	The antibody was purified by immunogen affinity chromatography.
Molecular Weight	Predicted: 15; Observed: 105 kD
Form/Buffer	Liquid in 0.42% Potassium phosphate, 0.87% Sodium chloride, pH 7.3, 30% glycerol, and 0.01% sodium azide.
Alternative Names	MEMD; CD166 antigen; Activated leukocyte cell adhesion molecule; CD166
Gene Symbol	ALCAM
Entrez Gene	214(Human); 11658(Mouse); 79559(Rat)
SwissProt	Q13740(Human); Q61490(Mouse); O35112(Rat)

\*AREX continuously optimizes our products. Webpage content may not reflect the latest updates. For inquiries, please contact [info@arexbio.com](mailto:info@arexbio.com) or your local distributor.

\*Clone Number, Reactivity, Source/Host and Clonality can be found in the product name and Key Features section above.

**DATASHEET****CD166 Rabbit Polyclonal Antibody**

CAT. NO. APA15042

**DATA**

Western blot analysis of CD166 expression in HepG2 (A), A549 (B) whole cell lysates. (Predicted band size: 15; 33; 63; 65 kD; Observed band size: 105 kD)

**STORAGE**

Store at 4°C short term. For long term storage, store at -20°C, avoiding freeze/thaw cycles.

**NOTE**

For Research Use Only. Not for diagnostic, therapeutics, prophylactic or in vivo use.