

**DATASHEET**

**ALDH1A3 Rabbit Polyclonal Antibody**

CAT. NO. APA15043

**KEY FEATURES**

Target	ALDH1A3	Source / Host	Rabbit
Reactivity	Human, Mouse	Clonality	Polyclonal
Applications	WB	Conjugation	Unconjugated
Form / Buffer	Liquid in 0.42% Potassium phosphate, 0.87% Sodium chloride, pH 7.3, 30% glycerol, and 0.01% sodium azide.		Storage at -20°C

**BACKGROUND**

Catalyzes the NAD-dependent oxidation of aldehyde substrates, such as all-trans-retinal and all-trans-13,14-dihydroretinal, to their corresponding carboxylic acids, all-trans-retinoate and all-trans-13,14-dihydroretinoate, respectively . High specificity for all-trans-retinal as substrate, can also accept acetaldehyde as substrate in vitro but with lower affinity . Required for the biosynthesis of normal levels of retinoate in the embryonic ocular and nasal regions; a critical lipid in the embryonic development of the eye and the nasal region .

**APPLICATION**

To ensure optimal assay performance, AREX recommends conducting reagent titration tailored to each testing system for optimal detection results.

WB	1:500 - 1:2000
----	----------------

\*Results are sample-specific. Please refer to your local assay conditions and test parameters for reference.

**PRODUCT OVERVIEW**

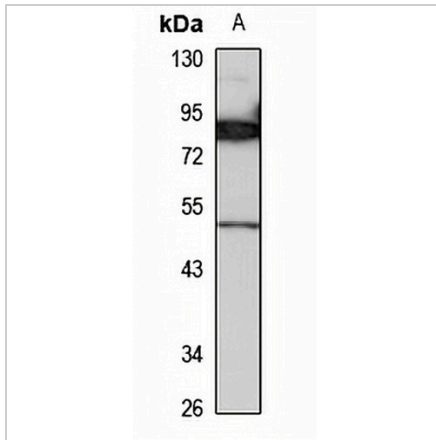
Description	Rabbit polyclonal antibody to ALDH1A3
Specificity	Recognizes endogenous levels of ALDH1A3 protein
Antibody Type	Primary antibody
Immunogen	Recombinant fusion protein of human ALDH1A3. The exact sequence is proprietary.
Purification	The antibody was purified by immunogen affinity chromatography.
Molecular Weight	Predicted: 56 kD; Observed: 50 kD
Form/Buffer	Liquid in 0.42% Potassium phosphate, 0.87% Sodium chloride, pH 7.3, 30% glycerol, and 0.01% sodium azide.
Alternative Names	ALDH6; Aldehyde dehydrogenase family 1 member A3; Aldehyde dehydrogenase 6; Retinaldehyde dehydrogenase 3; RALDH-3; RaLDH3
Gene Symbol	ALDH1A3
Entrez Gene	220(Human); 56847(Mouse)
SwissProt	P47895(Human); Q9JHW9(Mouse)

\*AREX continuously optimizes our products. Webpage content may not reflect the latest updates. For inquiries, please contact [info@arexbio.com](mailto:info@arexbio.com) or your local distributor.

\*Clone Number, Reactivity, Source/Host and Clonality can be found in the product name and Key Features section above.

**DATASHEET****ALDH1A3 Rabbit Polyclonal Antibody**

CAT. NO. APA15043

**DATA**

Western blot analysis of ALDH1A3 expression in mouse pancreas (A) whole cell lysates.  
(Predicted band size: 56 kD; Observed band size: 50 kD)

**STORAGE**

Store at 4°C short term. For long term storage, store at -20°C, avoiding freeze/thaw cycles.

**NOTE**

For Research Use Only. Not for diagnostic, therapeutics, prophylactic or in vivo use.