

## DATASHEET

# ALDH1L2 Rabbit Polyclonal Antibody

CAT. NO. APA15044

### KEY FEATURES

Target	ALDH1L2	Source / Host	Rabbit
Reactivity	Human, Mouse, Rat	Clonality	Polyclonal
Applications	WB	Conjugation	Unconjugated
Form / Buffer	Liquid in 0.42% Potassium phosphate, 0.87% Sodium chloride, pH 7.3, 30% glycerol, and 0.01% sodium azide.		Storage at -20°C

### BACKGROUND

Mitochondrial 10-formyltetrahydrofolate dehydrogenase that catalyzes the NADP(+)-dependent conversion of 10-formyltetrahydrofolate to tetrahydrofolate and carbon dioxide.

### APPLICATION

To ensure optimal assay performance, AREX recommends conducting reagent titration tailored to each testing system for optimal detection results.

WB	1:500 - 1:2000
----	----------------

\*Results are sample-specific. Please refer to your local assay conditions and test parameters for reference.

### PRODUCT OVERVIEW

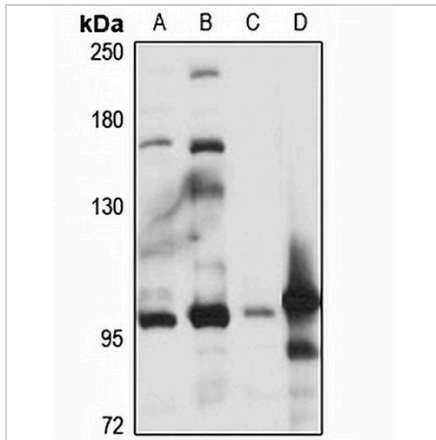
Description	Rabbit polyclonal antibody to ALDH1L2
Specificity	Recognizes endogenous levels of ALDH1L2 protein
Antibody Type	Primary antibody
Immunogen	Recombinant fusion protein of human ALDH1L2. The exact sequence is proprietary.
Purification	The antibody was purified by immunogen affinity chromatography.
Molecular Weight	Predicted: 22; Observed: 102 kD
Form/Buffer	Liquid in 0.42% Potassium phosphate, 0.87% Sodium chloride, pH 7.3, 30% glycerol, and 0.01% sodium azide.
Alternative Names	Mitochondrial 10-formyltetrahydrofolate dehydrogenase; Mitochondrial 10-FTHFDH; mtFDH; Aldehyde dehydrogenase family 1 member L2
Gene Symbol	ALDH1L2
Entrez Gene	160428(Human); 216188(Mouse)
SwissProt	Q3SY69(Human); Q8K009(Mouse)

\*AREX continuously optimizes our products. Webpage content may not reflect the latest updates. For inquiries, please contact [info@arexbio.com](mailto:info@arexbio.com) or your local distributor.

\*Clone Number, Reactivity, Source/Host and Clonality can be found in the product name and Key Features section above.

**DATASHEET****ALDH1L2 Rabbit Polyclonal Antibody**

CAT. NO. APA15044

**DATA**

Western blot analysis of ALDH1L2 expression in HeLa (A), NIH3T3 (B), mouse heart (C), rat pancreas (D) whole cell lysates. (Predicted band size: 22; 57; 101 kD; Observed band size: 102 kD)

**STORAGE**

Store at 4°C short term. For long term storage, store at -20°C, avoiding freeze/thaw cycles.

**NOTE**

For Research Use Only. Not for diagnostic, therapeutics, prophylactic or in vivo use.