

DATASHEET

ALG1 Rabbit Polyclonal Antibody

CAT. NO. APA15046

KEY FEATURES

Target	ALG1	Source / Host	Rabbit
Reactivity	Human, Mouse, Rat	Clonality	Polyclonal
Applications	WB, IF/ICC	Conjugation	Unconjugated
Form / Buffer	Liquid in 0.42% Potassium phosphate, 0.87% Sodium chloride, pH 7.3, 30% glycerol, and 0.01% sodium azide.		Storage at -20°C

BACKGROUND

Mannosyltransferase that operates in the biosynthetic pathway of dolichol-linked oligosaccharides, the glycan precursors employed in protein asparagine (N)-glycosylation. The assembly of dolichol-linked oligosaccharides begins on the cytosolic side of the endoplasmic reticulum membrane and finishes in its lumen. The sequential addition of sugars to dolichol pyrophosphate produces dolichol-linked oligosaccharides containing fourteen sugars, including two GlcNAcs, nine mannoses and three glucoses. Once assembled, the oligosaccharide is transferred from the lipid to nascent proteins by oligosaccharyltransferases.

APPLICATION

To ensure optimal assay performance, AREX recommends conducting reagent titration tailored to each testing system for optimal detection results.

WB	1:500 - 1:2000
IF/ICC	1:50 - 1:200

*Results are sample-specific. Please refer to your local assay conditions and test parameters for reference.

PRODUCT OVERVIEW

Description	Rabbit polyclonal antibody to ALG1
Specificity	Recognizes endogenous levels of ALG1 protein
Antibody Type	Primary antibody
Immunogen	Recombinant fusion protein of human ALG1. The exact sequence is proprietary.
Purification	The antibody was purified by immunogen affinity chromatography.
Molecular Weight	Predicted: 40; Observed: 60 kD
Form/Buffer	Liquid in 0.42% Potassium phosphate, 0.87% Sodium chloride, pH 7.3, 30% glycerol, and 0.01% sodium azide.
Alternative Names	HMAT1; HMT1; Chitobiosyldiphosphodolichol beta-mannosyltransferase; Asparagine-linked glycosylation protein 1 homolog; Beta-1 4-mannosyltransferase; GDP-Man:GlcNAc2-PP-dolichol mannosyltransferase; GDP-mannose-dolichol diphosphochitobiose mannosyltransferase; Mannosyltransferase-1; MT-1; hMat-1
Gene Symbol	ALG1
Entrez Gene	56052(Human); 208211(Mouse)
SwissProt	Q9BT22(Human); Q921Q3(Mouse)

*AREX continuously optimizes our products. Webpage content may not reflect the latest updates. For inquiries, please contact info@arex.bio or your local distributor.

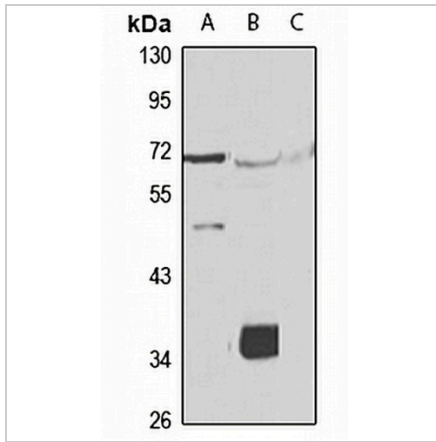
*Clone Number, Reactivity, Source/Host and Clonality can be found in the product name and Key Features section above.

DATASHEET

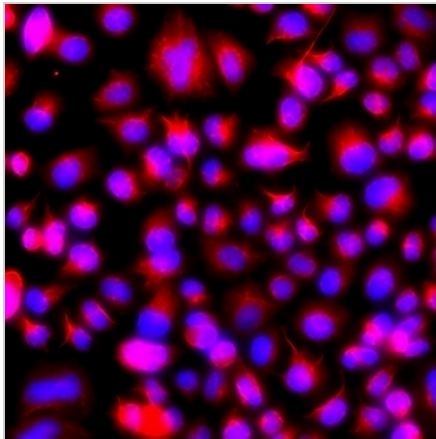
ALG1 Rabbit Polyclonal Antibody

CAT. NO. APA15046

DATA



Western blot analysis of ALG1 expression in HepG2 (A), mouse kidney (B), rat liver (C) whole cell lysates. (Predicted band size: 40; 52 kD; Observed band size: 60 kD)



Immunofluorescent analysis of ALG1 staining in A549 cells. Formalin-fixed cells were permeabilized with 0.1% Triton X-100 in TBS for 5-10 minutes and blocked with 3% BSA-PBS for 30 minutes at room temperature. Cells were probed with the primary antibody in 3% BSA-PBS and incubated overnight at 4 °C in a humidified chamber. Cells were washed with PBST and incubated with a Alexa Fluor 594-conjugated secondary antibody (red) in PBS at room temperature in the dark.

STORAGE

Store at 4°C short term. For long term storage, store at -20°C, avoiding freeze/thaw cycles.

NOTE

For Research Use Only. Not for diagnostic, therapeutics, prophylactic or in vivo use.