

DATASHEET

ALKBH6 Rabbit Polyclonal Antibody

CAT. NO. APA15051

KEY FEATURES

Target	ALKBH6	Source / Host	Rabbit
Reactivity	Human, Mouse, Rat	Clonality	Polyclonal
Applications	WB	Conjugation	Unconjugated
Form / Buffer	Liquid in 0.42% Potassium phosphate, 0.87% Sodium chloride, pH 7.3, 30% glycerol, and 0.01% sodium azide.		Storage at-20°C

BACKGROUND

Probable Fe(2+)/2-oxoglutarate-dependent dioxygenase involved in oxidative demethylation of nucleic acids /2-oxoglutarate-dependent dioxygenase involved in oxidative demethylation of nucleic acids . Binds nucleic acids with a preference for ssDNA or ssRNA to other types of DNAs . May play a role in nucleic acid damage repair .

APPLICATION

To ensure optimal assay performance, AREX recommends conducting reagent titration tailored to each testing system for optimal detection results.

WB	1:500 - 1:2000
----	----------------

*Results are sample-specific. Please refer to your local assay conditions and test parameters for reference.

PRODUCT OVERVIEW

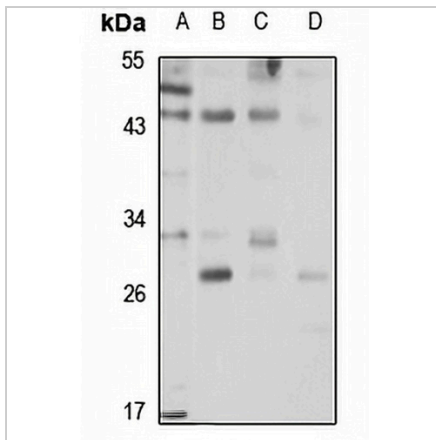
Description	Rabbit polyclonal antibody to ALKBH6
Specificity	Recognizes endogenous levels of ALKBH6 protein
Antibody Type	Primary antibody
Immunogen	Recombinant fusion protein of human ALKBH6. The exact sequence is proprietary.
Purification	The antibody was purified by immunogen affinity chromatography.
Molecular Weight	Predicted: 15; Observed: 26 kD
Form/Buffer	Liquid in 0.42% Potassium phosphate, 0.87% Sodium chloride, pH 7.3, 30% glycerol, and 0.01% sodium azide.
Alternative Names	ABH6; Alpha-ketoglutarate-dependent dioxygenase alkB homolog 6; Alkylated DNA repair protein alkB homolog 6
Gene Symbol	ALKBH6
Entrez Gene	84964(Human); 233065(Mouse)
SwissProt	Q3KRA9(Human); Q8K2U2(Mouse)

*AREX continuously optimizes our products. Webpage content may not reflect the latest updates. For inquiries, please contact info@arexbio.com or your local distributor.

*Clone Number, Reactivity, Source/Host and Clonality can be found in the product name and Key Features section above.

DATASHEET**ALKBH6 Rabbit Polyclonal Antibody**

CAT. NO. APA15051

DATA

Western blot analysis of ALKBH6 expression in K562 (A), mouse lung (B), rat brain (C), rat heart (D) whole cell lysates. (Predicted band size: 15; 26; 29 kD; Observed band size: 26 kD)

STORAGE

Store at 4°C short term. For long term storage, store at -20°C, avoiding freeze/thaw cycles.

NOTE

For Research Use Only. Not for diagnostic, therapeutics, prophylactic or in vivo use.