

DATASHEET

MIS Rabbit Polyclonal Antibody

CAT. NO. APA15057

KEY FEATURES

Target	MIS	Source / Host	Rabbit
Reactivity	Human, Mouse, Rat	Clonality	Polyclonal
Applications	WB, IHC	Conjugation	Unconjugated
Form / Buffer	Liquid in 0.42% Potassium phosphate, 0.87% Sodium chloride, pH 7.3, 30% glycerol, and 0.01% sodium azide.		Storage at -20°C

BACKGROUND

The anti-Muellerian hormone (AMH) plays an important role in several reproductive functions. Anti-Muellerian hormone binds and activates AMHR2, its specific type-II receptor, that heterodimerizes with type-I receptors (ACVR1 and BMPRI1A) to regulate target gene expression through downstream SMAD protein signal transduction. Produced and secreted by Sertoli cells of the male fetus, anti-Muellerian hormone induces Mullerian duct regression during male fetal sexual differentiation. In female, it is produced by granulosa cells of the preantral and small antral follicles and acts as a negative regulator of the primordial to primary follicle transition and decreases FSH sensitivity of growing follicles.

APPLICATION

To ensure optimal assay performance, AREX recommends conducting reagent titration tailored to each testing system for optimal detection results.

WB	1:500 - 1:2000
IHC	1:50 - 1:200

*Results are sample-specific. Please refer to your local assay conditions and test parameters for reference.

PRODUCT OVERVIEW

Description	Rabbit polyclonal antibody to MIS
Specificity	Recognizes endogenous levels of MIS protein
Antibody Type	Primary antibody
Immunogen	Recombinant fusion protein of human MIS. The exact sequence is proprietary.
Purification	The antibody was purified by immunogen affinity chromatography.
Molecular Weight	Predicted: 59 kD; Observed: 60 kD
Form/Buffer	Liquid in 0.42% Potassium phosphate, 0.87% Sodium chloride, pH 7.3, 30% glycerol, and 0.01% sodium azide.
Alternative Names	MIF; Mullerian-inhibiting factor; Anti-Muellerian hormone; AMH; Mullerian-inhibiting substance; MIS
Gene Symbol	AMH
Entrez Gene	268(Human); 25378(Rat)
SwissProt	P03971(Human); P27106(Mouse); P49000(Rat)

*AREX continuously optimizes our products. Webpage content may not reflect the latest updates. For inquiries, please contact info@arexbio.com or your local distributor.

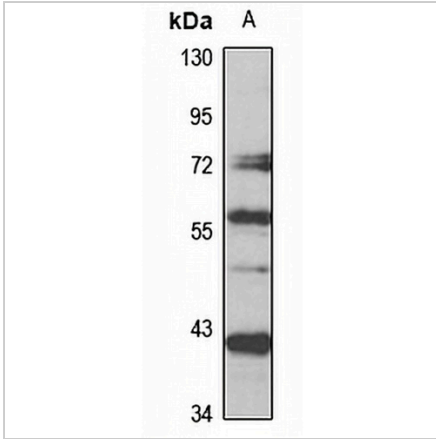
*Clone Number, Reactivity, Source/Host and Clonality can be found in the product name and Key Features section above.

DATASHEET

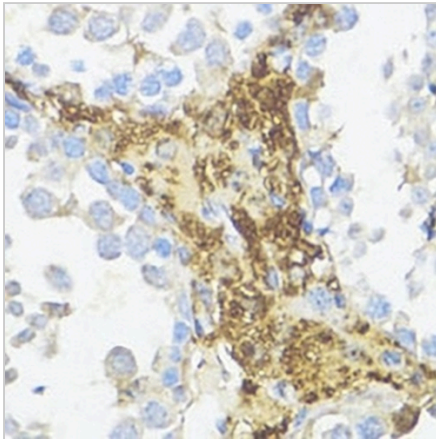
MIS Rabbit Polyclonal Antibody

CAT. NO. APA15057

DATA



Western blot analysis of MIS expression in U87MG (A) whole cell lysates. (Predicted band size: 59 kD; Observed band size: 60 kD)



Immunohistochemical analysis of MIS staining in mouse testis formalin fixed paraffin embedded tissue section. The section was pre-treated using heat mediated antigen retrieval with sodium citrate buffer (pH 6.0). The section was then incubated with the antibody at room temperature and detected using an HRP conjugated compact polymer system. DAB was used as the chromogen. The section was then counterstained with haematoxylin and mounted with DPX.

STORAGE

Store at 4°C short term. For long term storage, store at -20°C, avoiding freeze/thaw cycles.

NOTE

For Research Use Only. Not for diagnostic, therapeutics, prophylactic or in vivo use.