

## DATASHEET

# ANKLE2 Rabbit Polyclonal Antibody

CAT. NO. APA15064

### KEY FEATURES

Target	ANKLE2	Source / Host	Rabbit
Reactivity	Human, Mouse, Rat	Clonality	Polyclonal
Applications	WB, IHC	Conjugation	Unconjugated
Form / Buffer	Liquid in 0.42% Potassium phosphate, 0.87% Sodium chloride, pH 7.3, 30% glycerol, and 0.01% sodium azide.		Storage at -20°C

### BACKGROUND

Involved in mitotic nuclear envelope reassembly by promoting dephosphorylation of BAF/BANF1 during mitotic exit . Coordinates the control of BAF/BANF1 dephosphorylation by inhibiting VRK1 kinase and promoting dephosphorylation of BAF/BANF1 by protein phosphatase 2A (PP2A), thereby facilitating nuclear envelope assembly . May regulate nuclear localization of VRK1 in non-dividing cells . It is unclear whether it acts as a real PP2A regulatory subunit or whether it is involved in recruitment of the PP2A complex . Involved in brain development .

### APPLICATION

To ensure optimal assay performance, AREX recommends conducting reagent titration tailored to each testing system for optimal detection results.

WB	1:500 - 1:2000
IHC	1:50 - 1:200

\*Results are sample-specific. Please refer to your local assay conditions and test parameters for reference.

### PRODUCT OVERVIEW

Description	Rabbit polyclonal antibody to ANKLE2
Specificity	Recognizes endogenous levels of ANKLE2 protein
Antibody Type	Primary antibody
Immunogen	Recombinant fusion protein of human ANKLE2. The exact sequence is proprietary.
Purification	The antibody was purified by immunogen affinity chromatography.
Molecular Weight	Predicted: 104 kD; Observed: 104 kD
Form/Buffer	Liquid in 0.42% Potassium phosphate, 0.87% Sodium chloride, pH 7.3, 30% glycerol, and 0.01% sodium azide.
Alternative Names	KIAA0692; LEM4; Ankyrin repeat and LEM domain-containing protein 2; LEM domain-containing protein 4
Gene Symbol	ANKLE2
Entrez Gene	23141(Human); 71782(Mouse); 360829(Rat)
SwissProt	Q86XL3(Human); Q6P1H6(Mouse); Q7TP65(Rat)

\*AREX continuously optimizes our products. Webpage content may not reflect the latest updates. For inquiries, please contact [info@arexbio.com](mailto:info@arexbio.com) or your local distributor.

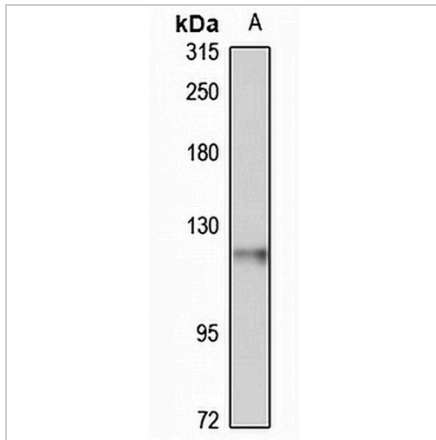
\*Clone Number, Reactivity, Source/Host and Clonality can be found in the product name and Key Features section above.

**DATASHEET**

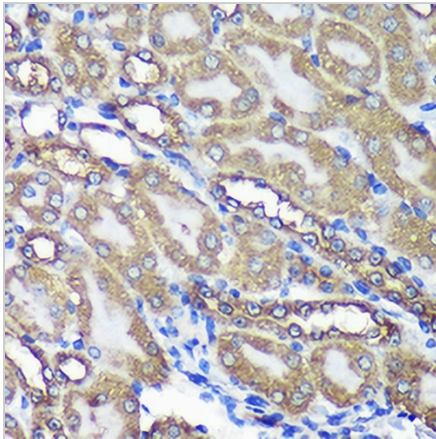
**ANKLE2 Rabbit Polyclonal Antibody**

CAT. NO. APA15064

**DATA**



Western blot analysis of ANKLE2 expression in Jurkat (A) whole cell lysates. (Predicted band size: 104 kD; Observed band size: 104 kD)



Immunohistochemical analysis of ANKLE2 staining in mouse kidney formalin fixed paraffin embedded tissue section. The section was pre-treated using heat mediated antigen retrieval with sodium citrate buffer (pH 6.0). The section was then incubated with the antibody at room temperature and detected using an HRP conjugated compact polymer system. DAB was used as the chromogen. The section was then counterstained with haematoxylin and mounted with DPX.

**STORAGE**

Store at 4°C short term. For long term storage, store at -20°C, avoiding freeze/thaw cycles.

**NOTE**

For Research Use Only. Not for diagnostic, therapeutics, prophylactic or in vivo use.