

DATASHEET

ANO2 Rabbit Polyclonal Antibody

CAT. NO. APA15068

KEY FEATURES

Target	ANO2	Source / Host	Rabbit
Reactivity	Human, Mouse	Clonality	Polyclonal
Applications	WB, IHC, IF/ICC	Conjugation	Unconjugated
Form / Buffer	Liquid in 0.42% Potassium phosphate, 0.87% Sodium chloride, pH 7.3, 30% glycerol, and 0.01% sodium azide.		Storage at-20°C

BACKGROUND

Calcium-activated chloride channel (CaCC) which may play a role in olfactory signal transduction. Odorant molecules bind to odor-sensing receptors (OSRs), leading to an increase in calcium entry that activates CaCC current which amplifies the depolarization of the OSR cells, ANO2 seems to be the underlying chloride channel involved in this process. May mediate light perception amplification in retina.

APPLICATION

To ensure optimal assay performance, AREX recommends conducting reagent titration tailored to each testing system for optimal detection results.

WB	1:500 - 1:2000
IHC	1:50 - 1:200
IF/ICC	1:50 - 1:200

*Results are sample-specific. Please refer to your local assay conditions and test parameters for reference.

PRODUCT OVERVIEW

Description	Rabbit polyclonal antibody to ANO2
Specificity	Recognizes endogenous levels of ANO2 protein
Antibody Type	Primary antibody
Immunogen	Recombinant fusion protein of human ANO2. The exact sequence is proprietary.
Purification	The antibody was purified by immunogen affinity chromatography.
Molecular Weight	Predicted: 113 kD; Observed: 114 kD
Form/Buffer	Liquid in 0.42% Potassium phosphate, 0.87% Sodium chloride, pH 7.3, 30% glycerol, and 0.01% sodium azide.
Alternative Names	C12orf3; TMEM16B; Anoctamin-2; Transmembrane protein 16B
Gene Symbol	ANO2
Entrez Gene	57101(Human); 243634(Mouse)
SwissProt	Q9NQ90(Human); Q8CFW1(Mouse)

*AREX continuously optimizes our products. Webpage content may not reflect the latest updates. For inquiries, please contact info@arexbio.com or your local distributor.

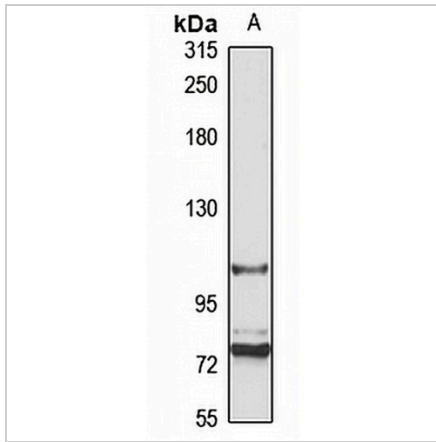
*Clone Number, Reactivity, Source/Host and Clonality can be found in the product name and Key Features section above.

DATASHEET

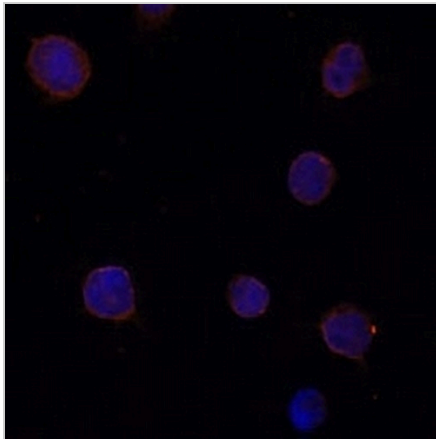
ANO2 Rabbit Polyclonal Antibody

CAT. NO. APA15068

DATA



Western blot analysis of ANO2 expression in mouse brain (A) whole cell lysates. (Predicted band size: 113 kD; Observed band size: 114 kD)



Immunofluorescent analysis of ANO2 staining in Y79 cells. Formalin-fixed cells were permeabilized with 0.1% Triton X-100 in TBS for 5-10 minutes and blocked with 3% BSA-PBS for 30 minutes at room temperature. Cells were probed with the primary antibody in 3% BSA-PBS and incubated overnight at 4 °C in a humidified chamber. Cells were washed with PBST and incubated with a Alexa Fluor 594-conjugated secondary antibody (red) in PBS at room temperature in the dark.

STORAGE

Store at 4°C short term. For long term storage, store at -20°C, avoiding freeze/thaw cycles.

NOTE

For Research Use Only. Not for diagnostic, therapeutics, prophylactic or in vivo use.