

DATASHEET

ANO6 Rabbit Polyclonal Antibody

CAT. NO. APA15070

KEY FEATURES

Target	ANO6	Source / Host	Rabbit
Reactivity	Human, Mouse, Rat	Clonality	Polyclonal
Applications	WB	Conjugation	Unconjugated
Form / Buffer	Liquid in 0.42% Potassium phosphate, 0.87% Sodium chloride, pH 7.3, 30% glycerol, and 0.01% sodium azide.		Storage at-20°C

BACKGROUND

Small-conductance calcium-activated nonselective cation (SCAN) channel which acts as a regulator of phospholipid scrambling in platelets and osteoblasts channel which acts as a regulator of phospholipid scrambling in platelets and osteoblasts . Phospholipid scrambling results in surface exposure of phosphatidylserine which in platelets is essential to trigger the clotting system whereas in osteoblasts is essential for the deposition of hydroxyapatite during bone mineralization . Has calcium-dependent phospholipid scramblase activity; scrambles phosphatidylserine, phosphatidylcholine and galactosylceramide . Can generate outwardly rectifying chloride channel currents in airway epithelial cells and Jurkat T lymphocytes .

APPLICATION

To ensure optimal assay performance, AREX recommends conducting reagent titration tailored to each testing system for optimal detection results.

WB	1:500 - 1:2000
----	----------------

*Results are sample-specific. Please refer to your local assay conditions and test parameters for reference.

PRODUCT OVERVIEW

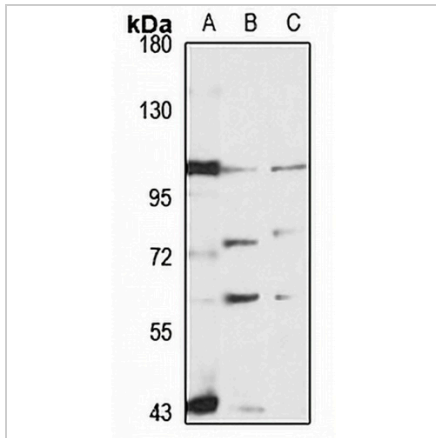
Description	Rabbit polyclonal antibody to ANO6
Specificity	Recognizes endogenous levels of ANO6 protein
Antibody Type	Primary antibody
Immunogen	Recombinant fusion protein of human ANO6. The exact sequence is proprietary.
Purification	The antibody was purified by immunogen affinity chromatography.
Molecular Weight	Predicted: 103; Observed: 110 kD
Form/Buffer	Liquid in 0.42% Potassium phosphate, 0.87% Sodium chloride, pH 7.3, 30% glycerol, and 0.01% sodium azide.
Alternative Names	TMEM16F; Anoctamin-6; Small-conductance calcium-activated nonselective cation channel; SCAN channel; Transmembrane protein 16F
Gene Symbol	ANO6
Entrez Gene	196527(Human); 105722(Mouse)
SwissProt	Q4KMQ2(Human); Q6P9J9(Mouse)

*AREX continuously optimizes our products. Webpage content may not reflect the latest updates. For inquiries, please contact info@arexbio.com or your local distributor.

*Clone Number, Reactivity, Source/Host and Clonality can be found in the product name and Key Features section above.

DATASHEET**ANO6 Rabbit Polyclonal Antibody**

CAT. NO. APA15070

DATA

Western blot analysis of ANO6 expression in A549 (A), mouse liver (B), rat brain (C) whole cell lysates. (Predicted band size: 103; 106; 108 kD; Observed band size: 110 kD)

STORAGE

Store at 4°C short term. For long term storage, store at -20°C, avoiding freeze/thaw cycles.

NOTE

For Research Use Only. Not for diagnostic, therapeutics, prophylactic or in vivo use.