

DATASHEET

AP1B1 Rabbit Polyclonal Antibody

CAT. NO. APA15073

KEY FEATURES

Target	AP1B1	Source / Host	Rabbit
Reactivity	Human, Mouse, Rat	Clonality	Polyclonal
Applications	WB	Conjugation	Unconjugated
Form / Buffer	Liquid in 0.42% Potassium phosphate, 0.87% Sodium chloride, pH 7.3, 30% glycerol, and 0.01% sodium azide.		Storage at -20°C

BACKGROUND

Subunit of clathrin-associated adaptor protein complex 1 that plays a role in protein sorting in the late-Golgi/trans-Golgi network (TGN) and/or endosomes and/or endosomes. The AP complexes mediate both the recruitment of clathrin to membranes and the recognition of sorting signals within the cytosolic tails of transmembrane cargo molecules.

APPLICATION

To ensure optimal assay performance, AREX recommends conducting reagent titration tailored to each testing system for optimal detection results.

WB	1:500 - 1:2000
----	----------------

*Results are sample-specific. Please refer to your local assay conditions and test parameters for reference.

PRODUCT OVERVIEW

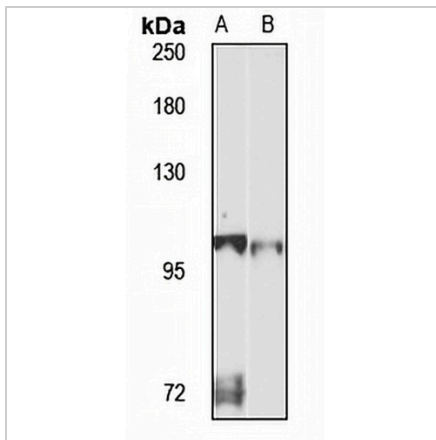
Description	Rabbit polyclonal antibody to AP1B1
Specificity	Recognizes endogenous levels of AP1B1 protein
Antibody Type	Primary antibody
Immunogen	KLH-conjugated synthetic peptide of human AP1B1. The exact sequence is proprietary.
Purification	The antibody was purified by immunogen affinity chromatography.
Molecular Weight	Predicted: 101; Observed: 105 kD
Form/Buffer	Liquid in 0.42% Potassium phosphate, 0.87% Sodium chloride, pH 7.3, 30% glycerol, and 0.01% sodium azide.
Alternative Names	ADTB1; BAM22; CLAPB2; AP-1 complex subunit beta-1; Adapter-related protein complex 1 subunit beta-1; Adaptor protein complex AP-1 subunit beta-1; Beta-1-adaptin; Beta-adaptin 1; Clathrin assembly protein complex 1 beta large chain; Golgi adaptor HA1/AP1 adaptin beta subunit
Gene Symbol	AP1B1
Entrez Gene	162(Human); 11764(Mouse); 29663(Rat)
SwissProt	Q10567(Human); O35643(Mouse); P52303(Rat)

*AREX continuously optimizes our products. Webpage content may not reflect the latest updates. For inquiries, please contact info@arexbio.com or your local distributor.

*Clone Number, Reactivity, Source/Host and Clonality can be found in the product name and Key Features section above.

DATASHEET**AP1B1 Rabbit Polyclonal Antibody**

CAT. NO. APA15073

DATA**STORAGE**

Store at 4°C short term. For long term storage, store at -20°C, avoiding freeze/thaw cycles.

NOTE

For Research Use Only. Not for diagnostic, therapeutics, prophylactic or in vivo use.