

## DATASHEET

# AP1S1 Rabbit Polyclonal Antibody

CAT. NO. APA15074

### KEY FEATURES

Target	AP1S1	Source / Host	Rabbit
Reactivity	Human	Clonality	Polyclonal
Applications	WB	Conjugation	Unconjugated
Form / Buffer	Liquid in 0.42% Potassium phosphate, 0.87% Sodium chloride, pH 7.3, 30% glycerol, and 0.01% sodium azide.		Storage at -20°C

### BACKGROUND

Subunit of clathrin-associated adaptor protein complex 1 that plays a role in protein sorting in the late-Golgi/trans-Golgi network (TGN) and/or endosomes. The AP complexes mediate both the recruitment of clathrin to membranes and the recognition of sorting signals within the cytosolic tails of transmembrane cargo molecules.

### APPLICATION

To ensure optimal assay performance, AREX recommends conducting reagent titration tailored to each testing system for optimal detection results.

WB	1:500 - 1:2000
----	----------------

\*Results are sample-specific. Please refer to your local assay conditions and test parameters for reference.

### PRODUCT OVERVIEW

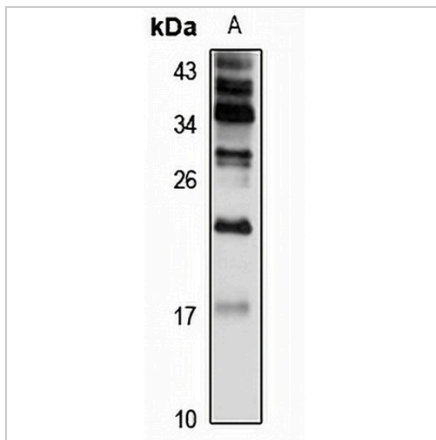
Description	Rabbit polyclonal antibody to AP1S1
Specificity	Recognizes endogenous levels of AP1S1 protein
Antibody Type	Primary antibody
Immunogen	Recombinant fusion protein of human AP1S1. The exact sequence is proprietary.
Purification	The antibody was purified by immunogen affinity chromatography.
Molecular Weight	Predicted: 16; Observed: 19 kD
Form/Buffer	Liquid in 0.42% Potassium phosphate, 0.87% Sodium chloride, pH 7.3, 30% glycerol, and 0.01% sodium azide.
Alternative Names	AP19; CLAPS1; AP-1 complex subunit sigma-1A; Adapter-related protein complex 1 subunit sigma-1A; Adaptor protein complex AP-1 subunit sigma-1A; Clathrin assembly protein complex 1 sigma-1A small chain; Clathrin coat assembly protein AP19; Golgi adaptor HA1/AP1 adaptin sigma-1A subunit; HA1 19 kDa subunit; Sigma 1a subunit of AP-1 clathrin; Sigma-adaptin 1A; Sigma1A-adaptin
Gene Symbol	AP1S1
Entrez Gene	1174(Human)
SwissProt	P61966(Human)

\*AREX continuously optimizes our products. Webpage content may not reflect the latest updates. For inquiries, please contact [info@arexbio.com](mailto:info@arexbio.com) or your local distributor.

\*Clone Number, Reactivity, Source/Host and Clonality can be found in the product name and Key Features section above.

**DATASHEET****AP1S1 Rabbit Polyclonal Antibody**

CAT. NO. APA15074

**DATA**

Western blot analysis of AP1S1 expression in SW480 (A) whole cell lysates. (Predicted band size: 16; 18 kD; Observed band size: 19 kD)

**STORAGE**

Store at 4°C short term. For long term storage, store at -20°C, avoiding freeze/thaw cycles.

**NOTE**

For Research Use Only. Not for diagnostic, therapeutics, prophylactic or in vivo use.